

APPENDIX D

FAA FPO TERPS Obstructions



id	X	Y	ELEV	LATITUDE	LONGITUDE	Descriptio	Pentrates 40:1 by	Pentrates 34:1 by	Pentrates 20:1 by	MSLheight	ObstacleID
1	401342.1	432668.9		271 40° 01' 15.0000" N	74° 49' 27.0000" W	TREE	60ft	0ft	0ft	271ft	KTTN0139
2	401199.2	521003.6		255 40° 15' 48.0000" N	74° 49' 33.0000" W	TREE	33ft	0ft	0ft	255ft	KTTN0023
3	401432.5	521205.1		242 40° 15' 50.0000" N	74° 49' 30.0000" W	TREE	28ft	0ft	0ft	242ft	KTTN0020
4	402756.5	522920.4		185 40° 16' 7.0000" N	74° 49' 13.0000" W	OL ON POLE	24ft	0ft	0ft	185ft	KTTN0015
5	399341.9	521820		256 40° 15' 56.0000" N	74° 49' 57.0000" W	TREE	14ft	0ft	0ft	256ft	KTTN0140
6	400732.2	520499.3		244 40° 15' 43.0000" N	74° 49' 39.0000" W	TREE	4ft	0ft	0ft	244ft	KTTN0025
7	402600.7	522718.6		171 40° 16' 5.0000" N	74° 49' 15.0000" W	BLDG	4ft	0ft	0ft	171ft	KTTN0016
8	399496.5	521718.2		242 40° 15' 55.0000" N	74° 49' 55.0000" W	TREE	1ft	0ft	0ft	242ft	KTTN0026
9	400890.6	521409.4		220 40° 15' 52.0000" N	74° 49' 37.0000" W	TREE	1ft	0ft	0ft	220ft	KTTN0021
10	408745.5	529071.9		266 40° 17' 8.0000" N	74° 47' 56.0000" W	TREE	0ft	6ft	0ft	266ft	KTTN0050/34-020906
11	408899.8	528869		267 40° 17' 6.0000" N	74° 47' 54.0000" W	TREE	0ft	7ft	0ft	267ft	KTTN0049/34020905
12	408744.5	528768.4		268 40° 17' 5.0000" N	74° 47' 56.0000" W	TREE	0ft	13ft	0ft	268ft	KTTN0048/34020904
13	407971.7	529378.1		256 40° 17' 11.0000" N	74° 48' 6.0000" W	TREE	0ft	5ft	0ft	256ft	KTTN0047/34-020903
14	407893.1	529074.8		265 40° 17' 8.0000" N	74° 48' 7.0000" W	TREE	0ft	21ft	0ft	265ft	KTTN0046/34-020902
15	408278.5	528466.4		253 40° 17' 2.0000" N	74° 48' 2.0000" W	TREE	0ft	14ft	0ft	253ft	KTTN0045/34-020901
16	408200.3	528264.3		260 40° 17' 0.0000" N	74° 48' 3.0000" W	TREE	0ft	27ft	0ft	260ft	KTTN0042/34-02924
17	407503.6	528469		228 40° 17' 2.0000" N	74° 48' 12.0000" W	TREE	0ft	7ft	0ft	228ft	KTTN0040
18	407348.6	528469.5		227 40° 17' 2.0000" N	74° 48' 14.0000" W	TREE	0ft	9ft	0ft	227ft	KTTN0038
19	407501.2	527760.7		210 40° 16' 55.0000" N	74° 48' 12.0000" W	TREE	0ft	1ft	0ft	210ft	KTTN0036/34-020933
20	407660.7	529075.6		241 40° 17' 8.0000" N	74° 48' 10.0000" W	POLE				241ft	34-020900
21	406959.4	527964.9		203 40° 16' 57.0000" N	74° 48' 19.0000" W	BLDG				203ft	34-020922
22	408198.3	527657.1		271 40° 16' 54.0000" N	74° 48' 3.0000" W	TREE	49ft	0ft	0ft	271ft	KTTN0132
23	408043.6	527758.9		259 40° 16' 55.0000" N	74° 48' 5.0000" W	TREE	39ft	0ft	0ft	259ft	KTTN0039
24	408276.5	527859.3		262 40° 16' 56.0000" N	74° 48' 2.0000" W	TREE	36ft	0ft	0ft	262ft	KTTN0041
25	408043.3	527657.7		253 40° 16' 54.0000" N	74° 48' 5.0000" W	TREE	35ft	0ft	0ft	253ft	KTTN0037
26	408200.3	528264.3		260 40° 17' 0.0000" N	74° 48' 3.0000" W	TREE	28ft	0ft	0ft	260ft	KTTN0042
27	407893.1	529074.8		265 40° 17' 8.0000" N	74° 48' 7.0000" W	TREE	24ft	0ft	0ft	265ft	KTTN0046
28	407505.7	529076.1		257 40° 17' 8.0000" N	74° 48' 12.0000" W	TREE	24ft	0ft	0ft	257ft	KTTN0043
29	407428.2	529076.4		250 40° 17' 8.0000" N	74° 48' 13.0000" W	POLE	18ft	0ft	0ft	250ft	KTTN0136
30	408744.5	528768.4		268 40° 17' 5.0000" N	74° 47' 56.0000" W	TREE	18ft	0ft	0ft	268ft	KTTN0048
31	408278.5	528466.4		253 40° 17' 2.0000" N	74° 48' 2.0000" W	TREE	16ft	0ft	0ft	253ft	KTTN0045
32	408899.8	528869		267 40° 17' 6.0000" N	74° 47' 54.0000" W	TREE	12ft	0ft	0ft	267ft	KTTN0049
33	408745.5	529071.9		266 40° 17' 8.0000" N	74° 47' 56.0000" W	TREE	11ft	0ft	0ft	266ft	KTTN0050
34	410300.7	530685.7		321 40° 17' 24.0000" N	74° 47' 36.0000" W	TOWER	10ft	0ft	0ft	321ft	34-000876
35	407500.1	527457.2		214 40° 16' 52.0000" N	74° 48' 12.0000" W	TREE	9ft	0ft	0ft	214ft	KTTN0035
36	407971.7	529378.1		256 40° 17' 11.0000" N	74° 48' 6.0000" W	TREE	9ft	0ft	0ft	256ft	KTTN0047
37	407348.6	528469.5		227 40° 17' 2.0000" N	74° 48' 14.0000" W	TREE	8ft	0ft	0ft	227ft	KTTN0038
38	410533.5	530786.1		325 40° 17' 25.0000" N	74° 47' 33.0000" W	TOWER	8ft	0ft	0ft	325ft	34-001068
39	407503.6	528469		228 40° 17' 2.0000" N	74° 48' 12.0000" W	TREE	6ft	0ft	0ft	228ft	KTTN0040
40	407660.7	529075.6		238 40° 17' 8.0000" N	74° 48' 10.0000" W	OL ON POLE	2ft	0ft	0ft	238ft	KTTN0044
41	403785.1	528785.6		244 40° 17' 5.0000" N	74° 49' 0.0000" W	TREE	28ft	0ft	0ft	244ft	KTTN0064
42	402853.7	528384.2		247 40° 17' 1.0000" N	74° 49' 12.0000" W	TREE	27ft	0ft	0ft	247ft	KTTN0067
43	403629.7	528684.9		240 40° 17' 4.0000" N	74° 49' 2.0000" W	TREE	25ft	0ft	0ft	240ft	KTTN0063
44	402931.6	528485.1		245 40° 17' 2.0000" N	74° 49' 11.0000" W	TREE	23ft	0ft	0ft	245ft	KTTN0068
45	403707.6	528785.9		238 40° 17' 5.0000" N	74° 49' 1.0000" W	TREE	22ft	0ft	0ft	238ft	KTTN0065
46	403552.2	528685.2		230 40° 17' 4.0000" N	74° 49' 3.0000" W	TREE	13ft	0ft	0ft	230ft	KTTN0066

47	403398.3	528989.3	239 40° 17' 7.0000" N	74° 49' 5.0000" W	TREE	9ft	0ft	0ft	239ft	KTTN0069
48	403398.3	528989.3	233 40° 17' 7.0000" N	74° 49' 5.0000" W	TREE	8ft	0ft	0ft	233ft	KTTN0070
49	406092.2	523718.1	194 40° 16' 15.0000" N	74° 48' 30.0000" W	POLE	0ft	9ft	1ft	194ft	34-00720
50	406481.8	524323.9	200 40° 16' 21.0000" N	74° 48' 25.0000" W	TREE	0ft	26ft	25ft	200ft	KTTN0074
51	406637.2	524424.5	218 40° 16' 22.0000" N	74° 48' 23.0000" W	TREE	0ft	43ft	42ft	218ft	KTTN0075
52	406404	524223	200 40° 16' 20.0000" N	74° 48' 26.0000" W	TREE	0ft	23ft	21ft	200ft	KTTN0076
53	406403.3	524020.6	186 40° 16' 18.0000" N	74° 48' 26.0000" W	RAIL ROAD	0ft	6ft	2ft	186ft	KTTN0078
54	406247.6	523818.7	205 40° 16' 16.0000" N	74° 48' 28.0000" W	TREE	0ft	22ft	15ft	205ft	KTTN0079
55	406324.4	523616.1	211 40° 16' 14.0000" N	74° 48' 27.0000" W	TREE	0ft	22ft	10ft	211ft	KTTN0081
56	406246.5	523515.2	223 40° 16' 13.0000" N	74° 48' 28.0000" W	TREE	0ft	33ft	22ft	223ft	KTTN0082
57	406555.8	523311.7	215 40° 16' 11.0000" N	74° 48' 24.0000" W	TREE	0ft	14ft	0ft	215ft	KTTN0085
58	406865.5	523209.5	212 40° 16' 10.0000" N	74° 48' 20.0000" W	TREE	0ft	4ft	0ft	212ft	KTTN0086
59	407175.2	523107.2	217 40° 16' 9.0000" N	74° 48' 16.0000" W	TREE	0ft	2ft	0ft	217ft	KTTN0087
60	406637.9	524626.9	231 40° 16' 24.0000" N	74° 48' 23.0000" W	TREE	54ft	0ft	0ft	231ft	KTTN0055
61	406714.7	524424.3	224 40° 16' 22.0000" N	74° 48' 22.0000" W	TREE	42ft	0ft	0ft	224ft	KTTN0077
62	406637.2	524424.5	218 40° 16' 22.0000" N	74° 48' 23.0000" W	TREE	38ft	0ft	0ft	218ft	KTTN0075
63	406168.6	523414.3	228 40° 16' 12.0000" N	74° 48' 29.0000" W	TREE	34ft	0ft	0ft	228ft	KTTN0083
64	406246.5	523515.2	223 40° 16' 13.0000" N	74° 48' 28.0000" W	TREE	31ft	0ft	0ft	223ft	KTTN0082
65	406560.4	524627.2	200 40° 16' 24.0000" N	74° 48' 24.0000" W	TREE	25ft	0ft	0ft	200ft	KTTN0056
66	406481.8	524323.9	200 40° 16' 21.0000" N	74° 48' 25.0000" W	TREE	21ft	0ft	0ft	200ft	KTTN0074
67	406090.8	523313.4	217 40° 16' 11.0000" N	74° 48' 30.0000" W	TREE	21ft	0ft	0ft	217ft	KTTN0084
68	406324.4	523616.1	211 40° 16' 14.0000" N	74° 48' 27.0000" W	TREE	19ft	0ft	0ft	211ft	KTTN0081
69	406404	524223	200 40° 16' 20.0000" N	74° 48' 26.0000" W	TREE	19ft	0ft	0ft	200ft	KTTN0076
70	406247.6	523818.7	205 40° 16' 16.0000" N	74° 48' 28.0000" W	TREE	18ft	0ft	0ft	205ft	KTTN0079
71	407642	523611.6	228 40° 16' 14.0000" N	74° 48' 10.0000" W	TREE	17ft	0ft	0ft	228ft	KTTN0128
72	406637.5	524525.7	193 40° 16' 23.0000" N	74° 48' 23.0000" W	TREE	15ft	0ft	0ft	193ft	KTTN0054
73	406555.8	523311.7	215 40° 16' 11.0000" N	74° 48' 24.0000" W	TREE	13ft	0ft	0ft	215ft	KTTN0085
74	408028.2	523205.5	238 40° 16' 10.0000" N	74° 48' 5.0000" W	TREE	13ft	0ft	0ft	238ft	KTTN0134
75	406092.2	523718.1	194 40° 16' 15.0000" N	74° 48' 30.0000" W	POLE	6ft	0ft	0ft	194ft	34-00720
76	407950.3	523104.6	230 40° 16' 9.0000" N	74° 48' 6.0000" W	TREE	5ft	0ft	0ft	230ft	KTTN0088
77	406865.5	523209.5	212 40° 16' 10.0000" N	74° 48' 20.0000" W	TREE	4ft	0ft	0ft	212ft	KTTN0086
78	407175.2	523107.2	217 40° 16' 9.0000" N	74° 48' 16.0000" W	TREE	3ft	0ft	0ft	217ft	KTTN0087
79	406403.3	524020.6	186 40° 16' 18.0000" N	74° 48' 26.0000" W	RAIL ROAD	2ft	0ft	0ft	186ft	KTTN0078
80	402856.3	529092.5	234 40° 17' 8.0000" N	74° 49' 12.0000" W	TREE	0ft	1ft	0ft	234ft	KTTN0072
81	403398.3	528989.3	233 40° 17' 7.0000" N	74° 49' 5.0000" W	TREE	0ft	11ft	4ft	233ft	KTTN0070
82	403398.3	528989.3	239 40° 17' 7.0000" N	74° 49' 5.0000" W	TREE	0ft	16ft	9ft	239ft	KTTN0069
83	402931.6	528485.1	245 40° 17' 2.0000" N	74° 49' 11.0000" W	TREE	0ft	27ft	23ft	245ft	KTTN0068
84	403552.2	528685.2	230 40° 17' 4.0000" N	74° 49' 3.0000" W	TREE	0ft	18ft	18ft	230ft	KTTN0066



TERPS 34:1 Penetrations



TERPS 20:1 Penetrations





Imagery Date: Jun 6, 2004

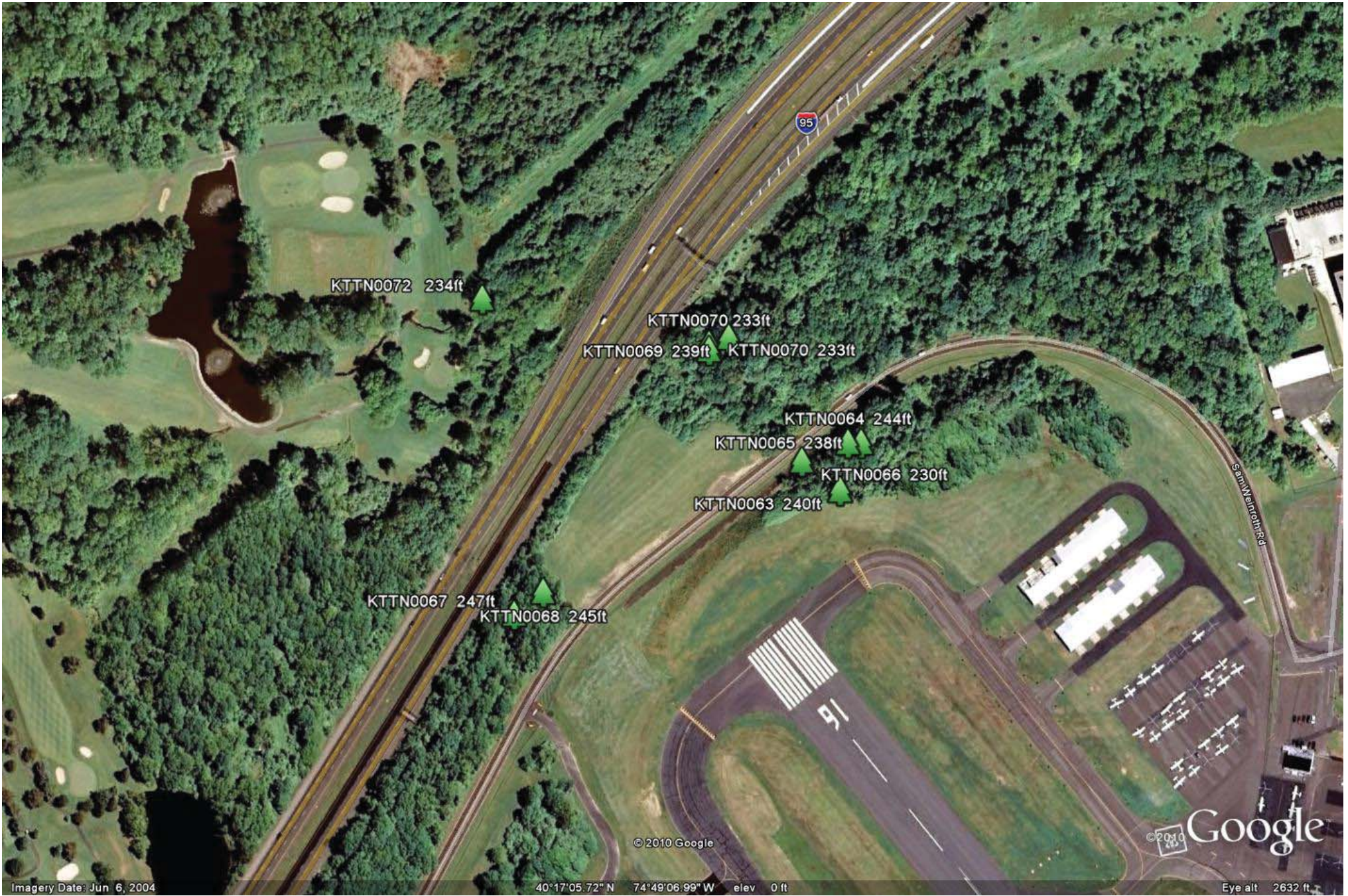
40°16'04.62" N 74°49'19.23" W elev 0 ft

Eye alt 2436 ft















[THIS PAGE INTENTIONALLY LEFT BLANK]