

PUBLIC PARTICIPATION PLAN

Applicant:

Air Products & Chemicals Inc.

Facility:

Massena Green Hydrogen Facility

NYSDEC Application Number:

6-4058-00198/00001

As Required by:

NYSDEC Commissioner's Policy Guidance CP-29

Submitted to:

New York State Department of Environmental Conservation
317 Washington Street
Watertown, NY 13601

Prepared by:

C&S Engineers, Inc.
499 Col. Eileen Collins Blvd.
Syracuse, NY 13212

Date:

July 12, 2023

PUBLIC PARTICIPATION PLAN

TABLE OF CONTENTS

- I. Introduction and Objective
- II. Project Description and Proposed Action
 - Project Overview
 - Nature of Proposed Project/Action and Purpose
 - Potential Impacts
- III. Stakeholder Identification & Contact List
- IV. Project Liaison
- V. Public Outreach Activities
 - Public Meeting(s)
 - Public Meeting Notice Preparation and Distribution
 - Fact Sheet Preparation and Distribution
 - Distribution of Notice of Complete Application
- VI. Document Repository
- VII. Submissions
 - Progress Report
 - Final Summary Report and Written Certification

Figures

1. Project Location, Potential Environmental Justice Area (PEJA) and Disadvantaged Communities (DAC) Map (including outreach radius)
2. Site Plan
3. Truck Routes Within the PEJA and DAC area

Appendix

- A. Stakeholder Contact List
- B. Public Meeting Notice
- C. Fact Sheet

PUBLIC PARTICIPATION PLAN

List of Acronyms

Acronym	Definition
AP-42	USEPA Compilation of Air Emissions Factors
ACT	Advanced Clean Trucks
CLCPA	Climate Leadership and Community Protection Act
CO ₂	Carbon Dioxide
CO ₂ eq	Carbon Dioxide Equivalents
CP-29	Commissioner Policy 29, Environmental Justice and Permitting
DAC	Disadvantaged Community
DAR	Division of Air Resources
DAR-21	Division of Air Resources Policy 21: The Climate Leadership and Community Protection Act and Air Permit Applications
DC	Direct Current
EJ	Environmental Justice
GHG	Greenhouse gas
GWP	Global Warming Potential
HAP	Hazardous Air Pollutant
MGD	Million Gallons per Day
MTPD	Metric Tons per Day
MW	Megawatt
NOCA	Notice of Complete Application
NYPA	New York Power Authority
NYSDEC	New York State Department of Environmental Conservation
PEJA	Potential Environmental Justice Area
PILOT	Payment in-lieu of taxes
PM	Particulate Matter
PM _{2.5}	Particulate Matter that is 2.5 micrometers or smaller in diameter
PM ₁₀	Particulate Matter that is 10 micrometers or smaller in diameter
PPP	Public Participation Plan
PTE	Potential To Emit
SDPES	State Pollutant Discharge Elimination System
SEQRA	State Environmental Quality Review Act
TSA	Temperature swing adsorption
USEPA	United States Environmental Protection Agency

I. INTRODUCTION AND OBJECTIVE

This Public Participation Plan (PPP) has been prepared by Air Products & Chemicals Inc. (Air Products) (hereinafter referred to as “applicant”) to fulfill and comply with the requirements of New York State Department of Environmental Conservation (NYSDEC) **Commissioner Policy 29, Environmental Justice and Permitting (CP-29)** and to maintain consistency with Section 7(3) of the Climate Leadership and Community Protection Act (CLCPA) for their proposed Massena Green Hydrogen Facility. The requirement of the PPP under CP-29 was triggered by the need for a new State Pollutant Discharge Elimination System (SPDES) Permit and which has been determined by New York State Department of Environmental Conservation (NYSDEC) to potentially impact one or more potential environmental justice area(s) (PEJA). The proposed facility has also been determined by NYSDEC to potentially impact one or more Disadvantaged Communities (DACs) (See **Figure 1**).

This PPP has been developed in accordance with the procedures established in CP-29 Section V.D and it aims to help ensure meaningful and effective public participation throughout the NYSDEC environmental permit review process. Public participation in the NYSDEC environmental permit review process means a program of activities that provides opportunities for stakeholders to be informed about and involved during the review of a proposed action.

The objective of this PPP is to outline and describe the program of activities that the applicant will implement to actively seek and enhance public participation during the application review process.

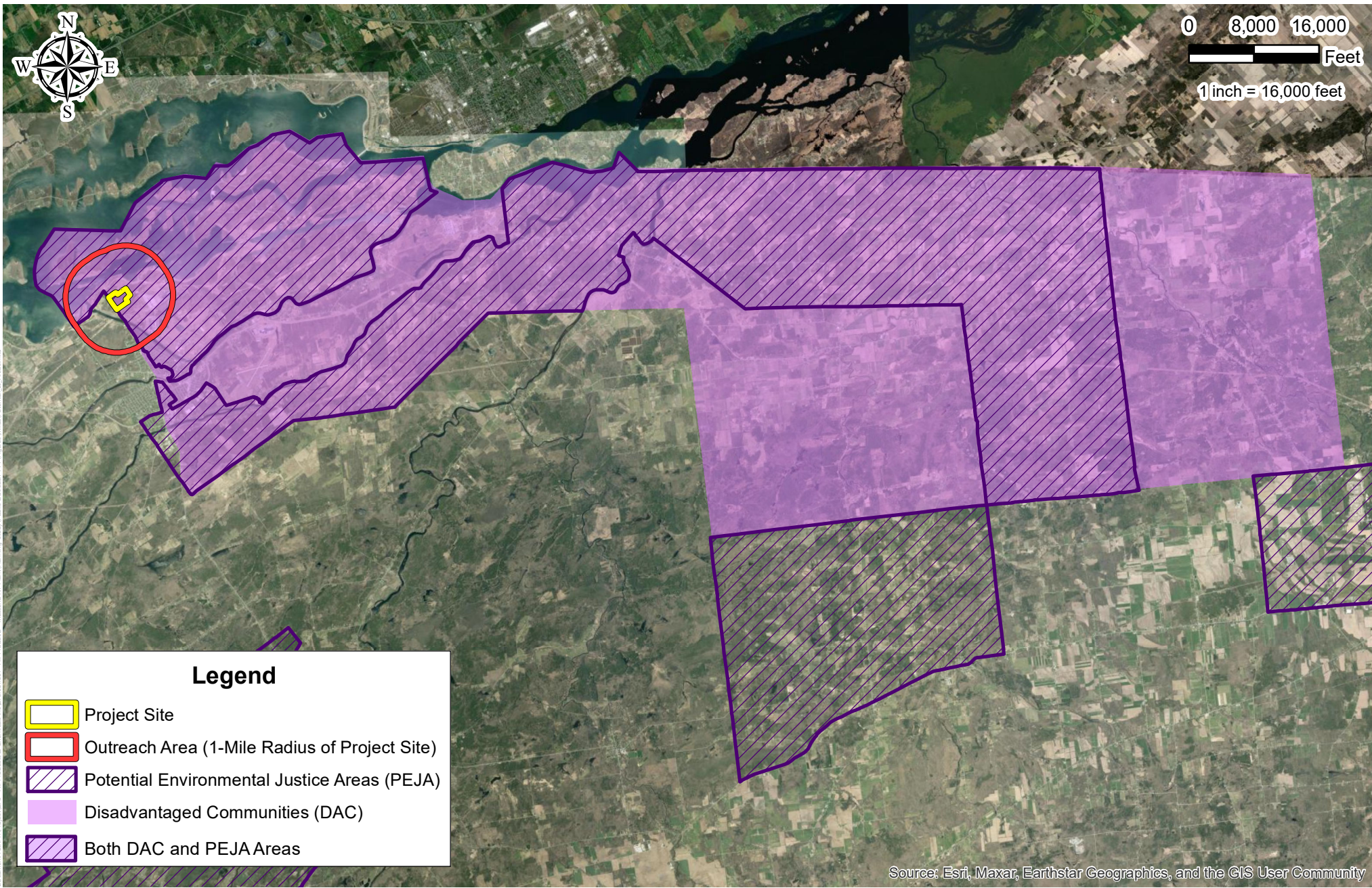


Figure 1 | Potential Environmental Justice Areas and Disadvantaged Communities

Air Products & Chemicals Inc.
 Massena Green Hydrogen Facility
 Town of Massena, St. Lawrence County, NY



II. PROJECT DESCRIPTION AND PROPOSED ACTION

Project Overview

Air Products is proposing development of the Massena Green Hydrogen Facility to harvest up to 35 metric tons per day (MTPD) of green hydrogen utilizing renewable power to be supplied by the New York Power Authority (NYPA). (Please note, a future expansion may potentially involve an additional 35 MTPD for a total of 70 MTPD.) The hydrogen facility involves production of liquid hydrogen by electrolysis. Electrolysis is a technique that uses direct electric current (DC) to drive an otherwise non-spontaneous chemical reaction (in this case to harvest hydrogen). The required electrical supply will be provided from the NYPA Hydro Preservation Power Program and renewable market power through NYPA's 345 kV line adjacent to the project site. The project will be using electrolyzers to harvest renewable hydrogen. The hydrogen produced in the electrolyzers will be liquified and distributed to customers for their use as a fuel source mainly for the mobility sector for trucks and buses.

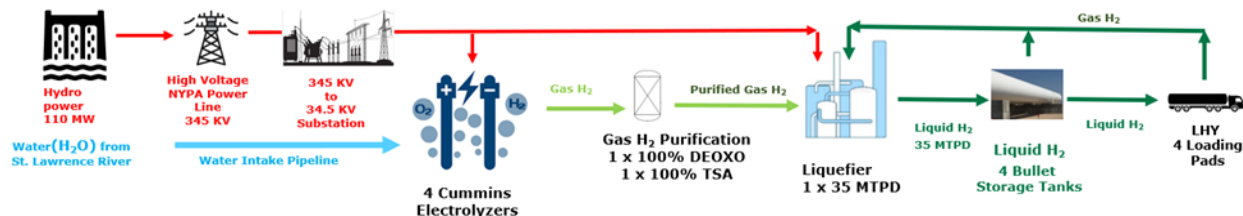
The facility will receive process water from the Village of Massena Water Department (which obtains water from the St. Lawrence River) and will discharge wastewater to the Massena Power Canal under a State Pollutant Discharge Elimination System (SPDES) permit issued by NYSDEC. A pump house will be constructed to tap into the influent raw water line prior to the Village of Massena water treatment plant processes, which consists of filtration, chlorination, fluorination, and zinc corrosion control. By tapping into the influent raw water line before the treatment processes, there will be a reduction in chemical usage, filtration and disposal, and general operation and maintenance. Air Products will pay the Village for the raw water it uses, similar to existing customers paying for the water they use. The Village is currently permitted to handle 5 million gallons per day (MGD) and currently uses less than 2 MGD. The expected average daily water use for Air Products is approximately 2.2 MGD, with a maximum of 2.5 MGD. Therefore, the Air Products facility will not affect the current water supply available to the Village of Massena.

The incoming water (raw water) to the Air Products facility will be treated via a clarification system and forwarded to a raw water storage tank. Water from the raw water tank is further purified by the demineralized water plant and then fed to the electrolyzers. The products from the electrolysis process are wet hydrogen and oxygen. The hydrogen product is purified in a purification system to remove the low quantities of oxygen from the hydrogen stream. The oxygen produced from the electrolyzer is vented.

This process is exothermic where the oxygen reacts with hydrogen to form water. The hot stream is cooled and passes through a knock-out drum to remove the water droplets. The hydrogen stream is then fed through a temperature swing adsorption (TSA) drier unit to remove all remaining water. The dry hydrogen product is sent to the hydrogen liquefaction plant.

The liquefaction plant feeds the trailer loading units and the liquified storage tanks. The liquid hydrogen that is not loaded directly into trucks is stored in four bullet tanks. The loading station can accommodate 4 trailers at any one time, once loaded the trailers are either stored on site or sent directly to deliver the product to customers.

Below is a diagram that illustrates the hydrogen harvesting process:



Nature of Proposed Project/Action and Purpose

The proposed project involves the production of liquid hydrogen to be used as a fuel source. The proposed project involves construction of a new facility that will be used in all facets of the process. This includes operation facilities, maintenance facilities, water intake facilities, infrastructure for the entire electrolysis process, storage tanks, and all facilities related to the distribution and dispensing system. A dedicated substation and utility corridor will be constructed to support the project. Also included in construction are all accessory/appurtenant facilities including access roads, parking lots, utilities, security fencing, and necessary stormwater management facilities. A site plan is provided as

Figure 2.

The purpose and need for the project is to harvest green liquid hydrogen. Green hydrogen is a clean and renewable energy source that is an alternate to fossil fuels. The low-carbon intensity liquid hydrogen product from the facility is expected to be sold to the mobility market in New York State as well as other potential northeast industrial markets. If all the hydrogen is used for the heavy-duty truck market, future climate benefits over the project's lifetime (approximately 30 years) would include avoiding about six million tons of carbon dioxide (CO₂), which is equivalent to the emissions from over 600 million gallons of diesel used in heavy-duty trucks.

Demand for green hydrogen for mobility and industrial applications is expected to grow significantly in the northeast as a result of the New York-led multi-state agreement to develop a proposal to become one of the regional clean hydrogen hubs designated through the federal Clean Hydrogen Hubs Program, and New York State's adoption of a new Advanced Clean Trucks (ACT) rule. New York State's Climate Leadership and Community Protection Act targets include: 40 percent greenhouse gas (GHG) reductions below 1990 levels by 2030, a carbon free electricity system by 2040, and an 85 percent reduction in GHGs below 1990 levels by 2050.



C&S Engineers, Inc.
 499 Col. Eileen Collins Blvd.
 Syracuse, New York 13212
 Phone: 315-455-2000
 Fax: 315-455-9667
 www.cscos.com

PRELIMINARY
 NOT FOR CONSTRUCTION



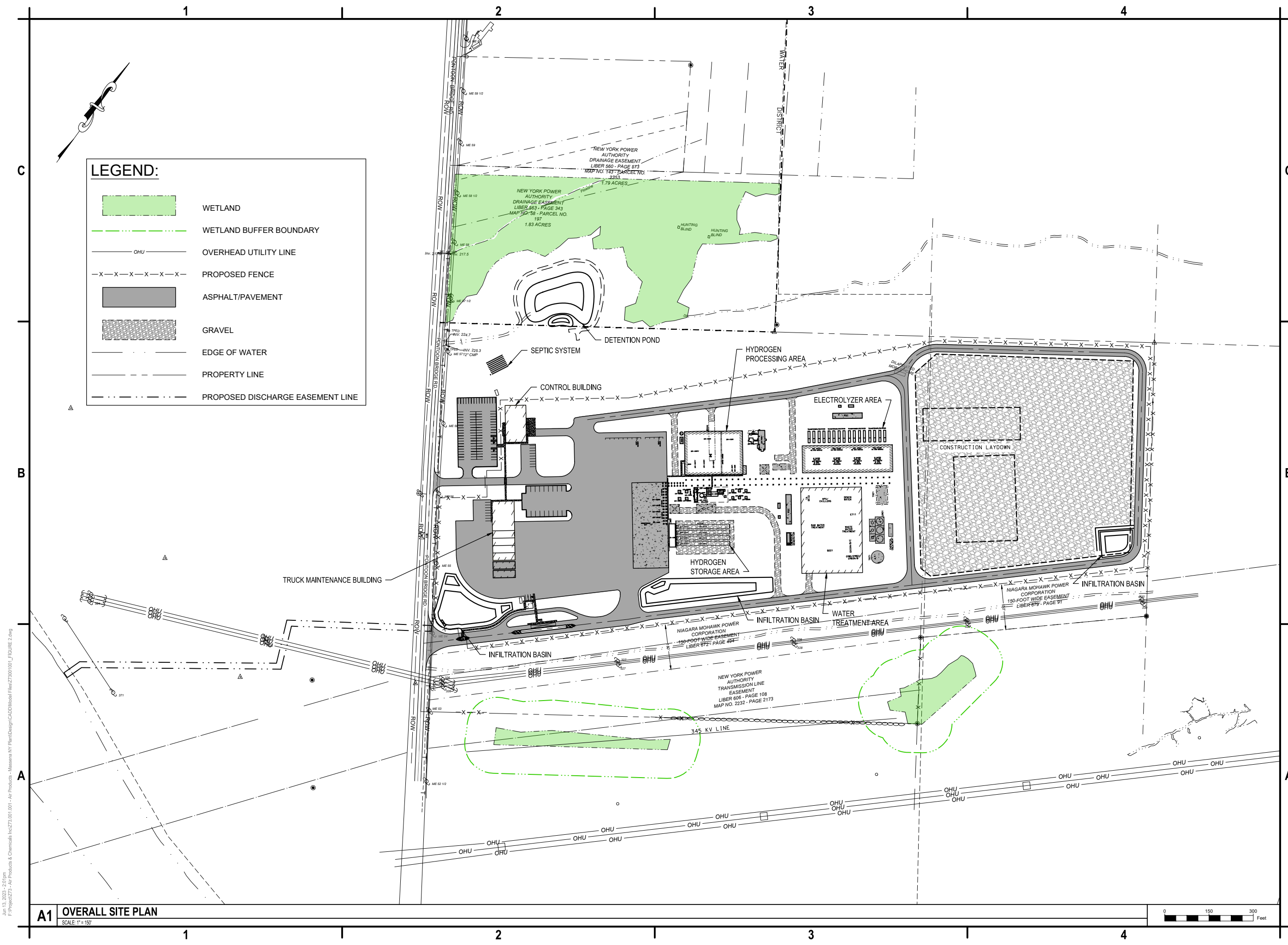
AIR PRODUCTS & CHEMICALS, INC.
MASSENA GREEN H2 PLANT
MASSENA, NEW YORK

MARK	DATE	DESCRIPTION
REVISIONS		
PROJECT NO: Z73.001.001		
DATE: MAY 2023		
DRAWN BY: B. BUCKINGHAM		
DESIGNED BY:		
CHECKED BY:		

NO ALTERATION PERMITTED HEREON
 EXCEPT AS PROVIDED UNDER SECTION
 7209 SUBDIVISION 2 OF THE NEW YORK
 EDUCATION LAW

OVERALL SITE PLAN

FIGURE 2



A1 OVERALL SITE PLAN
 SCALE: 1"=150'

Jun 13, 2023 - 2:07 pm
 P:\Projects\23-01-Air Products & Chemicals\16273.001.001 - Air Products - Maskena NY Plant\Design\CD\Model Files\2301001_7_FIGURE 2.dwg

Potential Impacts

An Environmental Justice (EJ) review is intended to assess if the proposed project would cause disproportionately high and adverse effects on minority and/or low-income populations. A disproportionately high and adverse impact is one that is 1) predominately borne by minority and/or low-income populations, and 2) is appreciably more severe or greater in magnitude to minority and/or low-income populations than that which will be suffered by non-minority and/or non-low-income populations.

Relocation of Residences or Businesses/Land Acquisition – The proposed project will not disrupt or divide any established communities nor will it require any relocation of local community businesses and residences.

Disruption of Local Traffic Patterns – No permanent impacts or disruptions to local traffic patterns are expected with the Proposed Project. There is the potential for increased traffic on local roadways serving the project area during and post construction. A traffic study was conducted for this project which involved analysis of the surrounding street network under existing and full build conditions. Under current conditions, the intersections associated with the study area operate at acceptable levels of service with additional capacity for an increase in traffic volumes. As stated in the traffic study, the proposed project will have minimal impacts on the study area and the associated intersections are expected to continue operation within their current level of service; therefore, no mitigation is recommended during operation of the proposed facility.

Traffic levels will increase during the anticipated thirty-seven-month construction window. These construction-related increases in observed traffic are temporary in nature and are not considered significant.

Community Disruption (Public Services and Social Conditions) – The proposed project will not affect the availability of public services. It will not result in an increase or decrease in availability of water, transportation, medical, education, or utility services.

Loss in Community Tax Base – The proposed project will have a payment in-lieu of taxes (PILOT) agreement with the Town of Massena, and in general will provide a benefit to the community through the PILOT program. This project will not result in a reduction to the community tax base, and therefore no significant impacts to the community tax base are expected.

Economic Activity – The proposed project will provide a benefit to the local community and its economy as a result of new employment opportunities. State Environmental Quality Review Act (SEQRA) guidance suggests that a potential moderate to large impact could occur as a result of a project if that project were to increase the permanent population by more than 5 percent. The project will not result in an

increase to the local population by more than 5 percent. As such, the project will not place a strain on existing infrastructure, or induce significant secondary development (i.e. housing, retail development, etc.). There will be temporary impacts within the region as a result of construction activity. These impacts will be relatively minor in scale and will temporarily benefit the surrounding communities by increasing expenditures on local services and materials during construction.

Air Quality – The proposed green hydrogen manufacturing facility is located within a NYSDEC mapped Disadvantaged Community (DAC) and PEJA. Although an air permit or registration is not required for the facility, NYSDEC requested an analysis of the proposed project under the Climate Leadership and Community Protection Act (CLCPA) be performed. The following are potential sources of emissions associated with the proposed project:

- a. The facility will have two emergency generators. An approximately 1 MW emergency generator to provide electricity in the event of a loss of power as well as a 200 KW emergency generator for the water pump house. Under normal conditions, both of the emergency generators are expected to operate for testing and maintenance approximately 2 hours per month or 24 hours annually. The generators will not operate more than 500 hours per year in order to maintain being an exempt activity under 6 NYCRR 201-3(c)(6)). Emissions associated with generator use were calculated at 24 hours per year, 500 hours per year, and the Potential to Emit (PTE) of operating 8,760 hours per year (24 hours per day, 365 days per year).
- b. Trucks will need to travel to and depart from the facility for the transport of the manufactured hydrogen. As identified on **Figure 3**, there will be two routes that the incoming and exiting truck will use depending upon the source and destination of the vehicle. The distance through the DAC eastbound and northbound is 68.8 miles round trip, while the distance travelled through the westbound and southbound routes is 18.4 miles round trip. At this time, the final delivery destination of the green hydrogen is unknown, but will be within 500 miles from Massena. Under normal operations when both phases of the project are complete, there will be approximately 42 incoming and exiting vehicles per day. The following provides the calculations of the mileage and gallons of diesel used by the trucks within the DAC as well as delivery to the final destination, conservatively assumed to be 500 miles.

Truck 1 (East/North)

68.8 miles (round trip) x 21 trucks x 365 days = 527,352 miles/year
527,352 miles/year ÷ 6.8 miles/gallon = 77,552 gallons/year

Truck 2 (West/South)

18.4 miles (round trip) x 21 trucks x 365 days = 141,036 miles/year
141,036 miles/year ÷ 6.8 miles/gallon = 20,741 gallons/year

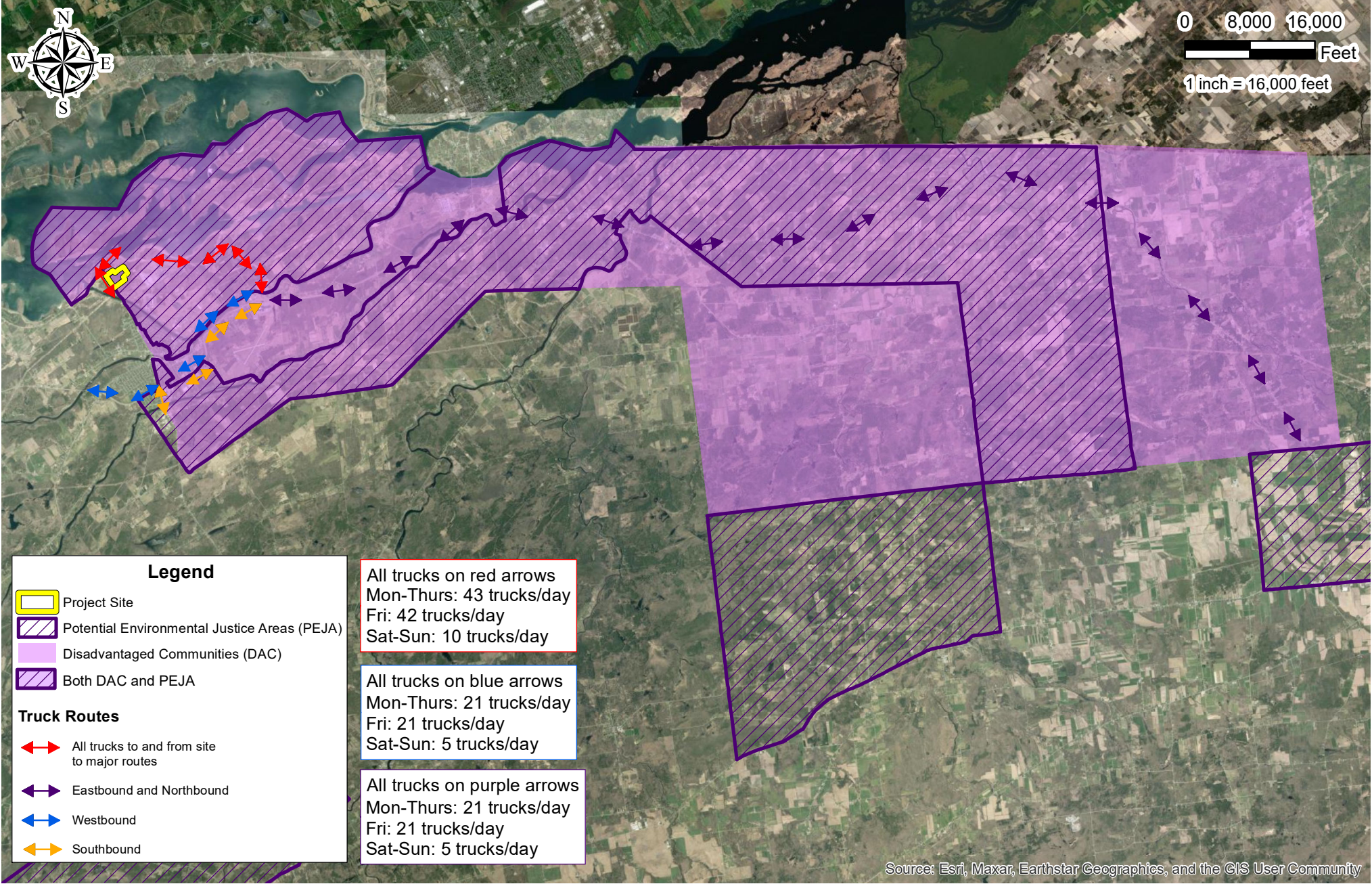


Figure 3 | Trucking Routes Within PEJA and DAC Areas

Air Products & Chemicals Inc.
 Massena Green Hydrogen Facility
 Town of Massena, St. Lawrence County, NY



Document Path: F:\Project\Z73 - Air Products & Chemicals Inc\Z73_001_001 - Air Products - Massena NY Plant\Planning-Study\Public_Outreach\PPM\Figures\Maps\Potential_EJ_Areas_w/Truck_Routes.mxd

Full Truck Delivery

500 miles (round trip) x 42 trucks x 365 days = 7,665,000 miles/year
7,665,000 miles/year ÷ 6.8 miles/gallon = 1,127,206 gallons/year

Greenhouse gas and co-pollutant emissions associated with diesel trucking routes and generator use were calculated for normal operating conditions and worst-case operating conditions. It should be noted that the truck traffic associated with the transport of hydrogen from the facility was based on 42 trips per day at full buildout. Emissions associated with generator use was calculated at 24 hours per year, 500 hours per year, and 8,760 hours per year.

Appropriate measures to adhere to state and federal air quality ordinances will be employed throughout the duration of the proposed project. Air Products plans to use hydrogen powered trucks for the transport of hydrogen, when hydrogen powered trucks become available. Besides using biodiesel, there are no technically and economically feasible alternatives to power the facility during electrical power outages without associated greenhouse gas and co-pollutant emissions. The use of the emergency generators and associated emissions are expected to be minimal, but Air Products will review the impact of using biodiesel compared to distillate diesel at facility start-up.

According to NYSDEC guidance, The Climate Leadership and Community Protection Act and Air Permit Applications (DAR-21), any new permit application needs to include an assessment of GHG emissions known to be attributable to the project, including upstream emissions attributed to production, transmission, and use of fossil fuels or imported electricity. The NYSDEC requested a CLCPA analysis as the proposed project falls under Section 7(2) and 7(3) of CLCPA according to Commissioner's Policy 49: Climate Change and DEC Action (CP-49). As stated in this policy, "projects involving construction of energy production, generation, transmission, or storage facilities; and projects with sources and activities that result in GHG emissions, directly or indirectly" must submit a CLCPA analysis. A comprehensive CLCPA analysis has been completed for the project. The following sections provide a summary of the completed CLCPA analysis.

The calculated emissions associated with the project include the facility's greenhouse gas (GHG) direct emissions of carbon dioxide, methane and nitrous oxide (**Item 1**); the carbon dioxide equivalent (**Item 2**) for these GHGs, upstream emissions (**Item 3**) associated with generators fuel usage; reasonably foreseeable downstream and indirect emissions (**Item 4**); and the projected emissions for years 2030 and 2050 (**Item 5**). In addition, as required by DAR-21, the CLCPA includes a discussion of the technical or economic feasibility of any alternatives or GHG mitigation measures for the project as well as how the facility intends to comply with New York State GHG reductions by 2030 and 2050 (**Item 6**). The following summarizes the results of the CLCPA analysis.

DAR-21 Item 1: Calculations were completed to address the overall project’s direct GHG emissions on both a PTE and the projected actual greenhouse gas emissions. These calculations were performed using emission factors and the high heat value found in *Table C-1 and Table C-2 of Part 98* for Distillate Fuel Oil No. 2. The following table summarizes the results of GHG emissions associated with operation of the emergency generators. It should be noted that the actual emissions were based on the expected generator usage of 2 hours per month, while the Potential to Emit (PTE) was conservatively calculated at a generator use rate of 8,760 hours per year.

ACTUAL AND PTE GHG EMISSIONS

Pollutant	Direct Actual GHG Emissions	Direct PTE GHG Emissions
	<i>(tons / yr)</i>	<i>(tons / yr)</i>
Carbon Dioxide	7.3	2,653.7
Methane	0.0003	0.108
Nitrous Oxide	0.0001	0.022

DAR-21 Item 2: Calculations were completed to determine the project’s PTE and actual emissions associated with emergency generators in units of carbon dioxide equivalents (CO₂eq) using the 20-year global warming potentials (GWP). The following table summarizes the results.

ACTUAL AND PTE CO₂eq EMISSIONS

Criteria Pollutant	Direct Actual CO₂eq Emissions	Direct PTE CO₂eq Emissions
	<i>(tons CO₂eq / yr)</i>	<i>(tons CO₂eq / yr)</i>
Carbon Dioxide	7.3	2,653.7
Methane	0.025	9.039
Nitrous Oxide	0.016	5.682
Total	7.341	2,668.421

GWP₂₀ Carbon Dioxide Equivalent values from 6NYCRR Part 496.5

DAR-21 Item 3: The upstream GHG emissions attributable to the project resulting from the extraction, transmission, and use of fossil fuels are calculated using the emission factors in *the NYSDEC (2022) Summary Report. 2022 NYS Statewide GHG Emissions Report - Appendix A. Emission Factors for Use by State Agencies and Applicants*. Since the facility will generate hydrogen through electrolysis and

liquefaction using green hydropower, the only upstream emissions will be associated with the diesel fuel used in the generators.

The following table summarizes the actual and PTE for CO₂eq associated with the upstream emissions from diesel/distillate fuel. The trucks coming into and leaving the facility to transport the manufactured hydrogen are considered downstream emissions and are addressed in **Item 4**.

UPSTREAM EMISSIONS (Generators Only)

Pollutant	Upstream Actual CO₂eq Emissions	Upstream PTE CO₂eq Emissions
	<i>(tons/yr)</i>	<i>(tons CO₂eq / yr)</i>
Carbon Dioxide	1.58	577.22
Methane	1.08	395.23
Nitrous Oxide	0.01	2.61
Total	2.67	975.06

DAR-21 Item 4: Downstream GHG emissions are associated with truck traffic transporting the green hydrogen to its final destination. At this time, the final delivery destination of the green hydrogen is unknown, but will be within 500 miles from Massena. Under normal operations when both phases of the project are complete, there will be approximately 42 incoming and exiting vehicles per day. Since the truck trip calculations were based on maximum production for both phases of the project, the actual emissions equal the PTE.

DOWNSTREAM EMISSIONS (Truck Traffic Only)

Pollutant	Actual and PTE for GHG Emissions	Downstream PTE CO₂eq Emissions
	<i>(tons / yr)</i>	<i>(tons CO₂e / yr)</i>
Carbon Dioxide	11,508.8	11,508.8
Methane	0.467	39.2
Nitrous Oxide	0.093	24.6
Total		11,572.6

Section 7(3) of CLCPA requires facilities to prioritize the reduction of co-pollutants in Disadvantaged Communities. Co-pollutants can be particulate matter and hazardous air pollutants (HAPs) that are emitted by GHG sources. According to USEPA Compilation of Air Emissions Factors (AP-42), there is the potential that small amounts of particulate matter (PM) and hazardous air pollutants (HAPs) can be

emitted as part of the combustion process from the generators. Truck particulate emissions were calculated based on <https://afleet.es.anl.gov/afleet/> (AFLEET), as requested by NYSDEC.

Based on the projected generators' hours of operation and associated diesel consumption, the HAP and PM emissions using AP-42 emission factors for detectable HAP compounds, are provided below.

Particulate Matter and Hazardous Air Pollutant Emissions from Generators

Million BTU (MMBtu) Usage		24 Hours 98.3 (MMBtu)	500 Hours 2,047 (MMBtu)	8,760 Hours 35,868 (MMBtu)
HAP Emissions	(lb./MMBtu)	(lb./yr.)	(lb./yr.)	(lb./yr.)
Benzene	9.33E-04	0.092	1.91	33.5
Toluene	4.09E-04	0.040	0.84	14.7
Xylene	2.58E-04	0.025	0.53	9.25
Formaldehyde	1.18E-03	0.12	2.42	42.3
Acetaldehyde	7.67E-04	0.075	1.57	27.5
Acrolein	7.88E-06	0.0008	0.016	0.28
Naphthalene	1.30E-04	0.013	0.27	4.66
TOTAL HAPS		0.36	7.54	132.2
Particulate Matter	3.10E-02	3.05	63.5	1,112

As requested by NYSDEC, the particulate emissions associated with the trucks transporting hydrogen from the facility through the DAC was determined using <https://afleet.es.anl.gov/afleet/>. The results are based on a Combination Long Haul Truck traveling 1,054,704 miles per year, which conservatively assumed all the trucks traveled the longer route through the DAC (68.8 miles/trip x 42 trips/day x 365 days/year). The total particulate matter less than 10 microns associated with truck traffic is 292.3 lb/yr and the particulate matter less than 2.5 microns is 86.0 lb/yr. After the conversion to hydrogen powered trucks, the total particulate matter less than 10 microns will be 234.8 lb/yr and the particulate matter less than 2.5 microns is 30.2 lb/yr. Using AFLEET, the following table provides the calculated annual emissions for particulate matter and other criteria pollutants associated with diesel and hydrogen powered vehicles.

Criteria Pollutant Emissions from Truck Traffic

Powertrain	Carbon Monoxide (CO)	Nitrogen Oxides (NOx)	Particulate Matter < 10 Microns (PM 10)	Particulate Matter < 2.5 Microns (PM 2.5)	Volatile Organic Compounds (VOC)	Sulfur Oxides (SOx)
	<i>(lb./yr.)</i>	<i>(lb./yr.)</i>	<i>(lb./yr.)</i>	<i>(lb./yr.)</i>	<i>(lb./yr.)</i>	<i>(lb./yr.)</i>
Fuel Cell Vehicle	0.00	0.00	234.8	30.2	0.00	0.00
Diesel	3,973.7	6,667.1	292.3	86.0	277.0	24.1

DAR-21 Item 5: CLCPA guidance requires projected CO₂eq emissions for the years 2030 and 2050, including any proposed future emission reduction strategies. As illustrated in the GHG emissions provided above, the downstream emissions associated with the truck delivery of the hydrogen is the most significant GHG emission.

Air Products plans to use hydrogen powered trucks for the transport of hydrogen, when hydrogen trucks become available. Air Products expects hydrogen powered trucks to be readily available by 2028, while the facility is expected to begin green hydrogen manufacturing in 2027. Therefore, diesel powered trucks will only operate for approximately 1-2 years.

With the conversion to hydrogen powered trucks, the only GHG emissions in 2030 and 2050 may be attributed to the combustion of distillate fuel in the emergency generators. With the expected usage of the generators being 24 hours per year, the CO₂eq emissions will be approximately 7.3 metric tons per year in both 2030 and 2050. An alternative to reduce GHG emissions would be to utilize a renewable fuel such as biodiesel, instead of petroleum-based diesel fuel. Since the generators will run approximately 24 hours per year during normal operations, there may be more GHG emissions associated with the trucking of biodiesel to the facility than the GHG emissions associated with the combustion of diesel/distillate fuel. Prior to start-up of the facility, Air Products will research the GHG emissions associated with the delivery and combustion of biodiesel compared to regular distillate fuel.

The Air Products – Massena Facility will generate up to 35 MTPD of green hydrogen utilizing renewable power to be supplied by the New York Power Authority (NYPA). The hydrogen produced will be distributed to customers for their use as a fuel source for trucks and buses. Therefore, the facility will reduce New York State’s and the country’s petroleum fuel consumption, reducing thousands of metric tons of CO₂eq associated with the use of gasoline and diesel fuel in vehicles.

DAR-21 Item 6: Since this is a new facility, there will be an increase in GHG emissions associated with combustion of diesel and distillate fuel in the generators as well as downstream emissions associated with the transport of the green hydrogen. As mentioned in Item 5, Air Products expects hydrogen powered trucks to be readily available by 2028, while the facility is expected to begin green hydrogen manufacturing in 2027. Therefore, diesel powered trucks will only operate for approximately 1-2 years.

For the generators, biodiesel may be a potential substitute for diesel in the future. However, there may be more GHG emissions associated with the trucking of biodiesel to the facility than the GHG emissions with the delivery and combustion of diesel/distillate fuel. Prior to start-up of the facility, Air Products will research the GHG emissions associated with the delivery and combustion of biodiesel compared to regular distillate fuel.

Mitigation – No significant socioeconomic impacts are expected and the proposed project is not anticipated to result in disproportionately high or adverse impacts to low income and/or minority populations. Subsequently no mitigation measures are proposed.

III. STAKEHOLDER IDENTIFICATION & CONTACT LIST

A contact list consisting of the names, addresses, phone numbers, or email addresses of stakeholders to the proposed action is provided in **Appendix A**. The contact list includes individuals and organizations with a direct stake in the proposed action and people and individuals and organizations that have expressed interest in the proposed project or similar projects affecting the same neighborhood or community.

To develop a draft contact list, the applicant reached out to residents/neighborhood groups who are near or adjacent to the proposed project and that will be or potentially will be affected by the operation; community boards, community leaders, local community, civic and recreational organizations, environmental and business groups.

The current contact list has been developed in consultation with NYSDEC by identifying stakeholders from the following categories: local government and elected officials; business owners, residents, and occupants; local civic, community, environmental and religious organizations; local news media; administrator/operator of any school or day care that live, work and/or represent a neighborhood or community within a one-mile radius of the project area, as well as the adjacent neighborhoods (see **Figure 1** for the project area radius).

The applicant will utilize this contact list to communicate and disseminate information about the proposed project/action and permit application review process to the affected community and stakeholders. At minimum, this includes distribution of the written information and outreach materials described in Section V to inform the community about upcoming public meetings and opportunities for public participation.

The contact list will be reviewed periodically and updated as appropriate throughout the permit application review process. The applicant will update the contact list with any new stakeholders identified during the public meeting or execution of other PPP components. In addition, individuals and organizations will be added to the contact list upon request. Such requests should be submitted to the project liaison identified in Section IV. Other additions to the contact list may be made at the discretion of the applicant or, at the request of the NYSDEC project manager, in consultation with other NYSDEC staff, as appropriate.

See **Appendix A** for a full contact list of Stakeholders.

IV. PROJECT LIAISON

A representative from the project team will be available during business hours at:

- Bryan A. Bayer, C&S Engineers, Inc.
- 315-455-2000 or toll free at 877-CS-SOLVE
- bbayer@cscos.com
- C&S Engineers, Inc.
499 Col. Eileen Collins Boulevard
Syracuse, New York 13212

Impacted residents and interested stakeholders can contact the project liaison listed above to provide input to the project team, discuss any issues or concerns and/or to ask questions or request information. The project liaison shall respond in a timely manner and in the manner appropriate to question or information request received. The project liaison will be responsible for tracking and documenting public input, inquires, questions, and information requests received, along with responses provided.

V. PUBLIC OUTREACH ACTIVITIES

The applicant will utilize a range of engagement strategies and conduct various public outreach activities to facilitate participation, involvement, and direct communication with the affected community during the permit application review process. The applicant will implement the public outreach activities outlined below upon finalization and approval of this PPP by NYSDEC.

In compliance with the requirements of CP-29, the applicant will hold public information meeting(s) to keep the public informed about the proposed action and the environmental permit review process. At minimum, the applicant will prepare, distribute and post written information and materials, including a meeting notice and fact sheet, to encourage dialogue and solicit input from interested stakeholders during the permit application review process. All public outreach materials and information will be prepared and presented in an easy-to-read, understandable format, using plain language free of legal terminology, and geared towards a non-technical audience.

The public meeting notice and fact sheet will be made available and disseminated in English. In addition, the public can contact the project liaison regarding the availability of language assistance and to request that the notice and fact sheet are translated into another language for comprehension by non-English speaking or limited proficiency stakeholders.

Public Meeting(s)

At the discretion of NYSDEC and, depending on the scale and nature of a project, one public meeting(s) must be conducted to satisfy the intent of CP-29. The meeting will be in-person with a virtual component.

A meeting is typically required near the end of the permit application review process to inform the public about: the status of, or, if applicable, the availability of, final application materials and draft permits for review; the pending NYSDEC public comment period, and deadline to submit written comments to NYSDEC, if established; and eventual final decision. Meetings may also be held earlier, either pursuant to this plan or possibly even earlier during the initial design phase.

Public Meeting

Applicant will facilitate an in-person and virtual public meeting on Wednesday, July 12, 2023 (in-person 4 p.m. to 5:30 p.m., virtual from 6 p.m. to 7 p.m.) to:

- Inform the public about the proposed project/action and permit application review status.
- Provide the opportunity for stakeholders to ask questions and express concerns about the project and identify how to obtain information or answers to questions after the meeting has concluded.
- Inform attendees how they may submit written comments on the permit application to the NYSDEC during the public comment period and, if available, identify any applicable deadlines.

Necessary Meeting Discussion Points and Requirements

All meetings will be facilitated by the applicant and/or representatives from their project team (project personnel) in-person and virtually via Zoom. During the meeting, the applicant and/or representatives from their project team will present a brief overview of the project, including any relevant background information, details on the permitting action, scope of work, schedule, and community impacts. The second part of the meeting will include a question-and answer-portion where the floor will be open for attendees to ask questions, make remarks, and/or express concerns. In addition, the following discussion points will be addressed:

- Provide an update on the permit application review process and identify outstanding application requirements and future milestones in the application review process.
- Make it clear that the meeting is being held prior to NYSDEC's permitting decision for the project/action.

- Identify the location of the online document repository and provide directions on how attendees may obtain and review materials relevant to the application, documents related to the meeting and other public participation plan components.
- Identify and provide contact information for the project liaison and announce procedures for how attendees may obtain answers to questions after the meeting has concluded and interested stakeholders can submit questions, express concerns, or request additional information by telephone, email, and in writing.
- Announce any future outreach, opportunities for public participation, and /or required follow-up with attendees including, but not limited to additional meetings and future mailings, including, but not limited to the Notice of Complete Application.

Attendance will be recorded during the meeting by sign-in sheets/participant lists. The applicant will track the number of attendees for all meetings held during implementation of this PPP and, where feasible and applicable, identify any affiliation of participants and interests represented at the meeting. In addition, the applicant will be responsible for documenting meeting notes or minutes, along with a record of comments and questions raised in the meeting and respective responses and answers provided. Attendees not identified on the contact list will have the option to be added in the event of future meetings or information sharing.

Public Meeting Notice Preparation and Distribution

Information regarding the details of the public meeting(s) and how to participate via computer and/or telephone is contained in the reader-friendly meeting notice(s) shown in **Appendix B**. The notice has been prepared in English. Through this notice, the public will be invited and encouraged to attend the public meeting scheduled on Wednesday, July 12, 2023.

The PPP has been approved by NYSDEC and the public meeting notice has been posted and available in the online document repository described in Section VI of this document. Two weeks in advance of the public meeting, the notice was published in the Massena Courier Observer and the Watertown Daily Times which are newspapers printed, published, and circulated in Massena, NY. In addition, the public meeting notice has been emailed, mailed and/or hand delivered (door-to-door) to the stakeholders identified in the contact list in **Appendix A** two weeks prior to the public virtual meeting.

Fact Sheet Preparation and Distribution

Factual information on the proposed project/action, including an overview, purpose statement, and potential impacts, is outlined in the reader-friendly fact sheet shown in **Appendix C**. In addition, the fact sheet outlines how interested stakeholders can: participate in the permit application review process; access the online document repository to review relevant application materials prior to the public

meeting; and contact the project team to obtain additional information. The fact sheet has been prepared in English.

The PPP has been approved by NYSDEC and the fact sheet is posted and available in the online document repository described in Section VI of this document. The applicant has distributed the fact sheet to provide stakeholders with relevant background on the proposed project/action and facilitate meaningful participation during the meeting. The fact sheet has been distributed together with the public meeting notice via email, mail and/or hand delivery (door-to-door).

The fact sheet, as well as the public meeting notice, is posted within the vicinity of the project site and is visible to the public. The fact sheet and public meeting notice are posted at the following locations within Massena, NY:

- From the Stakeholders List (Appendix A)
 - Emmanuel Congregational United Church of Christ
 - First United Methodist Church
 - Jefferson Elementary School
 - J.W. Leary Junior High School
 - Madison Elementary School
 - Massena High School
 - Nightengale Elementary School
 - Sacred Heart Church
 - St. John's Episcopal Church
 - The Church of Jesus Christ of Latter-Day Saints
 - Trinity Catholic School
 - Massena Community Center
 - E-Z Duz-It Laundromat
 - Massena Public Library

- Additional Businesses
 - On-A-Roll Deli & Meats
 - Dollar General
 - Stewart's Shops (2)
 - Fourth Coast Café
 - Corner Convenience & More
 - B Hair Studio
 - Rite Aid

Distribution of Notice of Complete Application

Once NYSDEC determines the application(s) for the proposed action/project is complete and provides the Notice of Complete Application (NOCA) to the applicant, the applicant will distribute the NOCA and draft permit, if applicable, to the meeting attendees and any identified interested parties, to provide notification regarding the start of the NYSDEC public comment period and to announce the deadline for submission of written comments to NYSDEC. If the NOCA is available at the time of the meeting, the applicant will distribute the NOCA at the public meeting. If the NOCA is not available at the time of the meeting, the applicant will provide explicit instructions on how to access the online repository and inform the attendees that, once available, the NOCA will be posted to the online document repository and will be distributed to attendees via email or mail as soon as possible, but no later than the date that the NOCA is published by the applicant in the print edition of a paid local newspaper that is circulated at least weekly and available in the municipality in which the project is located.

VI. DOCUMENT REPOSITORY

An online document repository has been established for the community and interested stakeholders to access and review information about the project. The online repository available at <https://www.cscos.com/massena-green-hydrogen-facility/> will provide information and documents relating to the project and permit application.

The repository will be updated throughout the application process with project-related information and written materials (i.e., application forms and supporting materials, draft permit, fact sheet, statement of basis (where applicable), the Notice of Complete Application provided by the NYSDEC, etc.).

VII. SUBMISSIONS

No later than two weeks following the meeting described in Section V, the applicant will submit a progress report to NYSDEC in the form of a brief memorandum or cover letter. At minimum, the progress report shall:

- describe progress to-date in implementing the approved PPP, identify the components of the plan yet to be implemented, and the timeline for completion of the PPP.
- summarize the public meeting (identify the time and date, number, affiliation and diversity of attendees and interests represented) and include or append copies of the written materials (i.e. virtual public meeting notice, fact sheet) along with any documentation that supports implementation of public outreach activities described in Section V, such as: the meeting sign-in sheet, record of attendees/participants, meeting presentation, notes or minutes, summary of questions and answers, and copy of newspaper notice or other proof of publication.
- identify any language or disability assistance requests received and document any considerations or accommodations made to-date,
- summarize or include a table that documents:
 - all substantive concerns raised to-date, either during the public meeting, or, received by the project liaison, along with responses provided by the applicant
 - all resolved and outstanding issues
- explain any project, design changes and/or measures to reduce potential impacts, either as result of community/public input or NYSDEC permitting review process.

The progress report will become part of the application record and will be posted to the online document repository so that it is readily available to the public.

Final Summary Report and Written Certification

Upon completion of the enhanced public participation plan, the applicant will submit written certification to NYSDEC to certify that it has fully executed and complied with the approved PPP. The certification shall be signed by the applicant, or the applicant's agent, and submitted to NYSDEC prior to a final decision on the application.

As part of the certification, the applicant shall submit a final summary report documenting the implementation of this PPP. The report will summarize the activities that occurred in accordance with the PPP and will identify any substantive concerns raised by stakeholders during the public meeting, or, at any time throughout the permitting process and detail the applicant's response(s) to any such concerns or questions. The applicant will include, or append, any documentation that supports the final summary report, such as: the meeting sign-in sheet(s), record of attendees/participants, meeting presentation, notes or minutes, summary of questions and answers, and copy of newspaper notice or other proof of publication. In addition, the report will identify any changes or modifications to the proposed project that were made or considered by the applicant to address or reduce concerns surrounding the permit application.

The final summary report and written certification will become part of the application record and will be posted to the online document repository so that it is readily available to the public.

APPENDIX A
Stakeholder Contact List



APPENDIX A – STAKEHOLDERS

Emmanuel Congregational United Church of Christ

39 West Orvis Street
Massena Springs, NY 13662
Tel: (315) 769-8523

First United Methodist Church

189 Main Street
Massena, NY 13662
Tel: (315) 769-8036

Holy Name of Jesus Academy

337 Trippany Road
Massena NY 13662
Tel: (315) 769-6030

Jefferson Elementary School

75 Bailey Rd
Massena, NY 13662
Tel: (315) 764-3730

J.W. Leary Junior High School

1 School Street
Massena, NY 13662
Tel: (315) 764-3720

Madison Elementary School

25 Owl Avenue
Massena, NY 13662
Tel: (315) 764-3740

Massena Baptist Church

5 Dover Street
Massena, NY 13662
Tel: (315) 769-0898

Massena Church of Christ

16 Stephenville Road
Massena, NY 13662
Tel: (315) 705-6007

**Massena High School**

84 Nightengale Avenue
Massena, NY 13662
Tel: (315) 764-3710

Massena International Airport

90 Aviation Road,
Massena, NY 13662
Tel: (315) 769-7605 | E-mail: airport@town.massena.ny.us

New Testament Church of Massena

265 Andrews Street
Massena, NY 13662
Tel: (315) 760-9951

New York State Department of Environmental Conservation (NYSDEC) Region 6

Regional Headquarter (Watertown) Office
317 Washington Street
Watertown, NY 13601
Tel: (315) 785 2239 | Fax: (315) 785-2242 | E-mail: dep.r6@dec.ny.gov

NYSDEC Region 6

Regional Sub-Office (Potsdam)
190 Outer Main Street, Suite 103
Potsdam, NY 13676
Tel: (315) 265-3090 | Fax: (315) 785-2242 | E-mail: dep.r6@dec.ny.gov

New York State Department of Health (DOH)

Central New York Regional Office
217 South Salina Street
Syracuse, NY 13202-1380
Tel: (315) 477-8472

Watertown Office
317 Washington Street
Watertown, NY 13601
Tel: (315) 785-2277

New York Power Authority

123 Main Street
White Plains, NY 10601-3170
Tel: (914) 681-6200 | E-mail: info@nypa.gov

**Nightengale Elementary School**

84 Nightengale Avenue
Massena, NY 13662
Tel: (315) 764-3750

Sacred Heart Church

212 Main Street
Massena, NY 13662
Tel: (315) 769-2469

St. John's Episcopal Church

139 Main Street
Massena, NY 13662
Tel: (315) 769-5203

Saint Lawrence County

County Courthouse
48 Court Street
Canton, New York 13617-1169
Tel: (315) 379-2276

Saint Lawrence County Industrial Development Agency (IDA)

Ernest J. LaBaff Industrial Building
19 Commerce Lane, Suite 1
Canton, New York 13617
Tel: (315) 379-9806 (TDD: 711) | Fax: (315) 386-2573 | E-mail: info@slcida.com

Saint Regis Mohawk Tribe**Attention: Tony David (Director, Environmental Division)**

71 Margaret Terrance Memorial Way
Akwesasne, NY 13655
Tel: (518) 358-5937, ext 5068; Email: tony.david@srmt-nsn.gov

The Church of Jesus Christ of Latter-Day Saints

284 Andrews Street
Massena, Ny 13662
Tel: (315) 764-9463

Town of Massena

Town Hall
60 Main Street
Massena, NY 13662
Tel: (315) 769-3588 | Fax: (315) 769-0578



Trinity Catholic School

188 Main Street
Massena, NY 13662
Tel: (315) 769-5911

**United States Environmental Protection Agency (USEPA) Region 2
Hudson River Field Office**

187 Wolf Road, Suite 303
Albany, NY 12205
Tel: (518) 747-4389 | Toll-Free Tel: (518) 407-0400 | Fax: (518) 747-8149 | E-mail: EPAHRFO@outlook.com

**USEPA EPA Region 2
Western New York Public Information Office**

U.S. Environmental Protection Agency
186 Exchange Street
Buffalo, New York 14204

Victory Point Church

170 Maple Street
Massena, NY 13622
Tel: (845) 270-8276

Village of Massena

Town Hall
60 Main Street
Massena, NY 13662
Tel: (315) 769-8625 | (315) 769-0257

****A separate list of residents within Potential Environmental Justice Areas includes over 1,000 addresses.***

Environmental Justice Residents within Project Area

County	Municipality	Parcel Address
1 St. Lawrence	Village of Massena	
2 St. Lawrence	Village of Massena	1 Garfield Ave
3 St. Lawrence	Village of Massena	1 Kennedy Ct
4 St. Lawrence	Village of Massena	1 Lincoln Dr
5 St. Lawrence	Village of Massena	1 Monroe Pkwy
6 St. Lawrence	Massena	1 Old River Rd
7 St. Lawrence	Village of Massena	1 Richards St
8 St. Lawrence	Village of Massena	1 Spruce St
9 St. Lawrence	Village of Massena	1 Washington St
10 St. Lawrence	Village of Massena	10 Belmont St
11 St. Lawrence	Village of Massena	10 Bishop Ave
12 St. Lawrence	Village of Massena	10 Chase St
13 St. Lawrence	Village of Massena	10 Cornell Ave
14 St. Lawrence	Village of Massena	10 Kennedy Ct
15 St. Lawrence	Village of Massena	10 Madison Ave
16 St. Lawrence	Village of Massena	10 Monroe Pkwy
17 St. Lawrence	Village of Massena	10 Pleasant St
18 St. Lawrence	Village of Massena	10 Richards St
19 St. Lawrence	Village of Massena	10 Somerset Ave
20 St. Lawrence	Village of Massena	10 Washington St
21 St. Lawrence	Village of Massena	10 Willow St
22 St. Lawrence	Village of Massena	10 Woodlawn Ave
23 St. Lawrence	Village of Massena	100 Bishop Ave & 27,29 Sycamore St
24 St. Lawrence	Village of Massena	100 Liberty Ave
25 St. Lawrence	Village of Massena	100 Woodlawn Ave
26 St. Lawrence	Village of Massena	101 Jefferson Ave
27 St. Lawrence	Village of Massena	101 Liberty Ave
28 St. Lawrence	Village of Massena	101 Stoughton Ave
29 St. Lawrence	Village of Massena	102 Liberty Ave
30 St. Lawrence	Village of Massena	103 Jefferson Ave
31 St. Lawrence	Village of Massena	103 Liberty Ave
32 St. Lawrence	Village of Massena	103 Stoughton Ave
33 St. Lawrence	Village of Massena	104 Liberty Ave
34 St. Lawrence	Village of Massena	104 Stoughton Ave
35 St. Lawrence	Village of Massena	105 Cornell Ave
36 St. Lawrence	Village of Massena	105 Jefferson Ave
37 St. Lawrence	Village of Massena	105 Liberty Ave
38 St. Lawrence	Village of Massena	106 Beach St
39 St. Lawrence	Village of Massena	106 Liberty Ave
40 St. Lawrence	Village of Massena	106 Stoughton Ave
41 St. Lawrence	Village of Massena	106 Woodlawn Ave
42 St. Lawrence	Village of Massena	107 Jefferson Ave
43 St. Lawrence	Village of Massena	107 Stoughton Ave
44 St. Lawrence	Village of Massena	108 Beach St

Environmental Justice Residents within Project Area

County	Municipality	Parcel Address
45 St. Lawrence	Village of Massena	108 Liberty Ave
46 St. Lawrence	Village of Massena	108 Stoughton Ave
47 St. Lawrence	Village of Massena	109 Bishop Ave
48 St. Lawrence	Village of Massena	109 Stoughton Ave
49 St. Lawrence	Village of Massena	11 Belmont St
50 St. Lawrence	Village of Massena	11 Chase St
51 St. Lawrence	Village of Massena	11 Cornell Ave
52 St. Lawrence	Village of Massena	11 Kennedy Ct
53 St. Lawrence	Village of Massena	11 Liberty Ave
54 St. Lawrence	Village of Massena	11 Madison Ave
55 St. Lawrence	Village of Massena	11 Monroe Pkwy
56 St. Lawrence	Village of Massena	11 Ober St
57 St. Lawrence	Village of Massena	11 Pleasant St
58 St. Lawrence	Village of Massena	11 Poplar St
59 St. Lawrence	Village of Massena	11 Richards St
60 St. Lawrence	Village of Massena	11 Somerset Ave
61 St. Lawrence	Village of Massena	11 Spruce St
62 St. Lawrence	Village of Massena	11 Syakos Pl
63 St. Lawrence	Village of Massena	11 Washington St
64 St. Lawrence	Village of Massena	11 Woodlawn Ave
65 St. Lawrence	Village of Massena	110 Beach St
66 St. Lawrence	Village of Massena	110 Jefferson Ave
67 St. Lawrence	Village of Massena	110 Liberty Ave
68 St. Lawrence	Village of Massena	110 Stoughton Ave
69 St. Lawrence	Village of Massena	111 Bishop Ave
70 St. Lawrence	Village of Massena	111 Jefferson Ave
71 St. Lawrence	Village of Massena	111 Stoughton Ave
72 St. Lawrence	Village of Massena	112 Beach St
73 St. Lawrence	Village of Massena	112 Jefferson Ave
74 St. Lawrence	Village of Massena	112 Liberty Ave
75 St. Lawrence	Village of Massena	112 Woodlawn Ave
76 St. Lawrence	Village of Massena	113 Jefferson Ave
77 St. Lawrence	Village of Massena	113 Stoughton Ave
78 St. Lawrence	Village of Massena	114 Beach St
79 St. Lawrence	Village of Massena	114 Jefferson Ave
80 St. Lawrence	Village of Massena	114 Liberty Ave
81 St. Lawrence	Village of Massena	114 Stoughton Ave
82 St. Lawrence	Village of Massena	115 Jefferson Ave
83 St. Lawrence	Village of Massena	115 Stoughton Ave
84 St. Lawrence	Village of Massena	116 Beach St
85 St. Lawrence	Village of Massena	116 Bishop Ave
86 St. Lawrence	Village of Massena	116 Jefferson Ave
87 St. Lawrence	Village of Massena	116 Liberty Ave
88 St. Lawrence	Village of Massena	117 Jefferson Ave

Environmental Justice Residents within Project Area

County	Municipality	Parcel Address
89 St. Lawrence	Village of Massena	117 Stoughton Ave
90 St. Lawrence	Village of Massena	117 Woodlawn Ave
91 St. Lawrence	Village of Massena	118 Beach St
92 St. Lawrence	Village of Massena	118 Jefferson Ave
93 St. Lawrence	Village of Massena	118 Liberty Ave
94 St. Lawrence	Village of Massena	118 Woodlawn Ave
95 St. Lawrence	Village of Massena	119 Jefferson Ave
96 St. Lawrence	Village of Massena	12 Bishop Ave
97 St. Lawrence	Village of Massena	12 Chase St
98 St. Lawrence	Village of Massena	12 Kennedy Ct
99 St. Lawrence	Village of Massena	12 Madison Ave
100 St. Lawrence	Village of Massena	12 Monroe Pkwy
101 St. Lawrence	Village of Massena	12 Ober St
102 St. Lawrence	Village of Massena	12 Pleasant St
103 St. Lawrence	Village of Massena	12 Richards St
104 St. Lawrence	Village of Massena	12 Somerset Ave
105 St. Lawrence	Village of Massena	12 Washington St
106 St. Lawrence	Village of Massena	12 Woodlawn Ave
107 St. Lawrence	Village of Massena	120 Beach St
108 St. Lawrence	Village of Massena	120 Jefferson Ave
109 St. Lawrence	Village of Massena	120 Liberty Ave
110 St. Lawrence	Village of Massena	120 Woodlawn Ave
111 St. Lawrence	Village of Massena	121 Jefferson Ave
112 St. Lawrence	Village of Massena	122 Beach St
113 St. Lawrence	Village of Massena	122 Jefferson Ave
114 St. Lawrence	Village of Massena	122 Liberty Ave
115 St. Lawrence	Village of Massena	122 Woodlawn Ave
116 St. Lawrence	Village of Massena	123 Jefferson Ave
117 St. Lawrence	Village of Massena	124 Beach St
118 St. Lawrence	Village of Massena	124 Jefferson Ave
119 St. Lawrence	Village of Massena	125 Jefferson Ave
120 St. Lawrence	Village of Massena	126 Beach St
121 St. Lawrence	Village of Massena	126 Jefferson Ave
122 St. Lawrence	Village of Massena	126 Liberty Ave
123 St. Lawrence	Village of Massena	127 Jefferson Ave
124 St. Lawrence	Village of Massena	128 Beach St
125 St. Lawrence	Village of Massena	128 Jefferson Ave
126 St. Lawrence	Village of Massena	128 Liberty Ave
127 St. Lawrence	Village of Massena	129 Jefferson Ave
128 St. Lawrence	Village of Massena	13 Belmont St
129 St. Lawrence	Village of Massena	13 Chase St
130 St. Lawrence	Village of Massena	13 Kennedy Ct
131 St. Lawrence	Village of Massena	13 Liberty Ave
132 St. Lawrence	Village of Massena	13 Madison Ave

Environmental Justice Residents within Project Area

County	Municipality	Parcel Address
133 St. Lawrence	Village of Massena	13 Monroe Pkwy
134 St. Lawrence	Village of Massena	13 Richards St
135 St. Lawrence	Village of Massena	13 Somerset Ave
136 St. Lawrence	Village of Massena	13 Sycamore St
137 St. Lawrence	Village of Massena	13 Washington St
138 St. Lawrence	Village of Massena	13 Willow St
139 St. Lawrence	Village of Massena	13 Woodlawn Ave
140 St. Lawrence	Village of Massena	130 Beach St
141 St. Lawrence	Village of Massena	130 Jefferson Ave
142 St. Lawrence	Village of Massena	130 Liberty Ave
143 St. Lawrence	Village of Massena	131 Jefferson Ave
144 St. Lawrence	Village of Massena	132 Beach St
145 St. Lawrence	Village of Massena	132 Liberty Ave
146 St. Lawrence	Village of Massena	133 Jefferson Ave
147 St. Lawrence	Village of Massena	134 Beach St
148 St. Lawrence	Village of Massena	134 Jefferson Ave
149 St. Lawrence	Village of Massena	134 Liberty Ave
150 St. Lawrence	Village of Massena	135 Jefferson Ave
151 St. Lawrence	Village of Massena	136 Beach St
152 St. Lawrence	Village of Massena	136 Jefferson Ave
153 St. Lawrence	Village of Massena	136 Liberty Ave
154 St. Lawrence	Village of Massena	137 Jefferson Ave
155 St. Lawrence	Village of Massena	138 Jefferson Ave
156 St. Lawrence	Village of Massena	138 McKinley Ave
157 St. Lawrence	Village of Massena	139 Jefferson Ave
158 St. Lawrence	Village of Massena	14 Bishop Ave
159 St. Lawrence	Village of Massena	14 Chase St
160 St. Lawrence	Village of Massena	14 Kennedy Ct
161 St. Lawrence	Village of Massena	14 Madison Ave
162 St. Lawrence	Village of Massena	14 Monroe Pkwy
163 St. Lawrence	Village of Massena	14 Ober St
164 St. Lawrence	Massena	14 Old River Rd
165 St. Lawrence	Village of Massena	14 Pleasant St
166 St. Lawrence	Village of Massena	14 Richards St
167 St. Lawrence	Village of Massena	14 Somerset Ave
168 St. Lawrence	Village of Massena	14 Washington St
169 St. Lawrence	Village of Massena	14 Woodlawn Ave
170 St. Lawrence	Village of Massena	140 Jefferson Ave
171 St. Lawrence	Village of Massena	140 McKinley Ct
172 St. Lawrence	Village of Massena	141 Beach St
173 St. Lawrence	Village of Massena	141 Jefferson Ave
174 St. Lawrence	Village of Massena	142 Jefferson Ave
175 St. Lawrence	Village of Massena	142 Liberty Ave
176 St. Lawrence	Village of Massena	142 McKinley Ct

Environmental Justice Residents within Project Area

County	Municipality	Parcel Address
177 St. Lawrence	Village of Massena	143 Beach St
178 St. Lawrence	Village of Massena	143 Jefferson Ave
179 St. Lawrence	Village of Massena	144 Jefferson Ave
180 St. Lawrence	Village of Massena	144 Liberty Ave
181 St. Lawrence	Village of Massena	144 McKinley Ct
182 St. Lawrence	Village of Massena	145 Beach St
183 St. Lawrence	Village of Massena	145 Jefferson Ave
184 St. Lawrence	Village of Massena	146 Jefferson Ave
185 St. Lawrence	Village of Massena	146 Liberty Ave
186 St. Lawrence	Village of Massena	146 McKinley Ct
187 St. Lawrence	Village of Massena	147 Beach St
188 St. Lawrence	Village of Massena	147 Jefferson Ave
189 St. Lawrence	Village of Massena	148 Jefferson Ave
190 St. Lawrence	Village of Massena	148 Liberty Ave
191 St. Lawrence	Village of Massena	148 McKinley Ct
192 St. Lawrence	Village of Massena	149 Beach St
193 St. Lawrence	Village of Massena	15 Belmont St
194 St. Lawrence	Village of Massena	15 Chase St
195 St. Lawrence	Massena	15 Club House Rd/Prvt
196 St. Lawrence	Village of Massena	15 Cooper St
197 St. Lawrence	Village of Massena	15 Cornell Ave
198 St. Lawrence	Village of Massena	15 Kennedy Ct
199 St. Lawrence	Village of Massena	15 Liberty Ave
200 St. Lawrence	Village of Massena	15 Madison Ave
201 St. Lawrence	Village of Massena	15 Monroe Pkwy
202 St. Lawrence	Village of Massena	15 Ober St
203 St. Lawrence	Village of Massena	15 Pleasant St
204 St. Lawrence	Village of Massena	15 Richards St
205 St. Lawrence	Village of Massena	15 Somerset Ave
206 St. Lawrence	Village of Massena	15 Spruce St
207 St. Lawrence	Village of Massena	15 Washington St
208 St. Lawrence	Village of Massena	15 Woodlawn Ave
209 St. Lawrence	Village of Massena	150 Jefferson Ave
210 St. Lawrence	Village of Massena	150 Liberty Ave
211 St. Lawrence	Village of Massena	150 McKinley Ct
212 St. Lawrence	Village of Massena	151 Beach St
213 St. Lawrence	Village of Massena	152 Jefferson Ave
214 St. Lawrence	Village of Massena	152 Liberty Ave
215 St. Lawrence	Village of Massena	152 McKinley Ave
216 St. Lawrence	Village of Massena	153 Beach St
217 St. Lawrence	Village of Massena	153 Jefferson Ave
218 St. Lawrence	Village of Massena	154 Jefferson Ave
219 St. Lawrence	Village of Massena	154 Liberty Ave
220 St. Lawrence	Village of Massena	155 Beach St

Environmental Justice Residents within Project Area

County	Municipality	Parcel Address
221 St. Lawrence	Village of Massena	155 Jefferson Ave
222 St. Lawrence	Village of Massena	156 Jefferson Ave
223 St. Lawrence	Village of Massena	156 Liberty Ave
224 St. Lawrence	Massena	1560 SH 131 St
225 St. Lawrence	Massena	1562 Sh 131
226 St. Lawrence	Massena	1566 Sh 131
227 St. Lawrence	Village of Massena	157 McKinley Ave
228 St. Lawrence	Massena	1570 Sh 131
229 St. Lawrence	Village of Massena	158 Jefferson Ave
230 St. Lawrence	Village of Massena	158 Liberty Ave
231 St. Lawrence	Village of Massena	159 McKinley Ave
232 St. Lawrence	Village of Massena	16 Belmont St
233 St. Lawrence	Village of Massena	16 Bishop Ave
234 St. Lawrence	Village of Massena	16 Chase St
235 St. Lawrence	Village of Massena	16 Madison Ave
236 St. Lawrence	Village of Massena	16 Monroe Pkwy
237 St. Lawrence	Village of Massena	16 Ober St
238 St. Lawrence	Village of Massena	16 Pleasant St
239 St. Lawrence	Village of Massena	16 Richards St
240 St. Lawrence	Village of Massena	16 Somerset Ave
241 St. Lawrence	Village of Massena	16 Spruce St
242 St. Lawrence	Village of Massena	16 Washington St
243 St. Lawrence	Village of Massena	16 Woodlawn Ave
244 St. Lawrence	Village of Massena	160 Jefferson Ave
245 St. Lawrence	Village of Massena	160 Liberty Ave
246 St. Lawrence	Village of Massena	161 McKinley Ave
247 St. Lawrence	Village of Massena	162 Jefferson Ave
248 St. Lawrence	Village of Massena	163 McKinley Ave
249 St. Lawrence	Village of Massena	164 Jefferson Ave
250 St. Lawrence	Village of Massena	165 McKinley Ave
251 St. Lawrence	Village of Massena	166 Jefferson Ave
252 St. Lawrence	Village of Massena	166 Park Ave
253 St. Lawrence	Village of Massena	167 McKinley Ave
254 St. Lawrence	Village of Massena	168 Jefferson Ave
255 St. Lawrence	Village of Massena	169 McKinley Ave
256 St. Lawrence	Village of Massena	17 Belmont St
257 St. Lawrence	Village of Massena	17 Chase St
258 St. Lawrence	Village of Massena	17 Cornell Ave
259 St. Lawrence	Village of Massena	17 Kennedy Ct
260 St. Lawrence	Village of Massena	17 Liberty Ave
261 St. Lawrence	Village of Massena	17 Monroe Pkwy
262 St. Lawrence	Village of Massena	17 Ober St
263 St. Lawrence	Village of Massena	17 Pleasant St
264 St. Lawrence	Village of Massena	17 Richards St

Environmental Justice Residents within Project Area

County	Municipality	Parcel Address
265 St. Lawrence	Village of Massena	17 Somerset Ave
266 St. Lawrence	Village of Massena	17 Washington St
267 St. Lawrence	Village of Massena	17 Woodlawn Ave
268 St. Lawrence	Village of Massena	170 Jefferson Ave
269 St. Lawrence	Village of Massena	170 Park Ave
270 St. Lawrence	Village of Massena	171 McKinley Ave
271 St. Lawrence	Village of Massena	172 Jefferson Ave
272 St. Lawrence	Village of Massena	173 Jefferson Ave
273 St. Lawrence	Village of Massena	173 McKinley Ave
274 St. Lawrence	Village of Massena	174 Jefferson Ave
275 St. Lawrence	Village of Massena	175 Jefferson Ave
276 St. Lawrence	Village of Massena	175 McKinley Ave
277 St. Lawrence	Village of Massena	176 Jefferson Ave
278 St. Lawrence	Village of Massena	177 McKinley Ave
279 St. Lawrence	Village of Massena	178 Jefferson Ave
280 St. Lawrence	Village of Massena	179 McKinley Ave
281 St. Lawrence	Village of Massena	18 Belmont St
282 St. Lawrence	Village of Massena	18 Bishop Ave
283 St. Lawrence	Village of Massena	18 Chase St
284 St. Lawrence	Village of Massena	18 Madison Ave
285 St. Lawrence	Village of Massena	18 Monroe Pkwy
286 St. Lawrence	Village of Massena	18 Ober St
287 St. Lawrence	Village of Massena	18 Pleasant St
288 St. Lawrence	Village of Massena	18 Richards St
289 St. Lawrence	Village of Massena	18 Somerset Ave
290 St. Lawrence	Village of Massena	18 Spruce St
291 St. Lawrence	Village of Massena	18 Washington St
292 St. Lawrence	Village of Massena	18 Willow St
293 St. Lawrence	Village of Massena	18 Woodlawn Ave
294 St. Lawrence	Village of Massena	180 Jefferson Ave
295 St. Lawrence	Village of Massena	181 Center St
296 St. Lawrence	Village of Massena	181 McKinley Ave
297 St. Lawrence	Village of Massena	181 Park Ave
298 St. Lawrence	Village of Massena	182 Jefferson Ave
299 St. Lawrence	Village of Massena	183 Jefferson Ave
300 St. Lawrence	Village of Massena	183 McKinley Ave
301 St. Lawrence	Village of Massena	184 Jefferson Ave
302 St. Lawrence	Village of Massena	185 Center St
303 St. Lawrence	Village of Massena	185 Jefferson Ave
304 St. Lawrence	Village of Massena	185 McKinley Ave
305 St. Lawrence	Village of Massena	185 Park Ave
306 St. Lawrence	Village of Massena	186 Jefferson Ave
307 St. Lawrence	Village of Massena	187 Center St
308 St. Lawrence	Village of Massena	187 Jefferson Ave

Environmental Justice Residents within Project Area

County	Municipality	Parcel Address
309 St. Lawrence	Village of Massena	187 McKinley Ave
310 St. Lawrence	Village of Massena	188 Jefferson Ave
311 St. Lawrence	Village of Massena	189 Center St
312 St. Lawrence	Village of Massena	189 Jefferson Ave
313 St. Lawrence	Village of Massena	19 Belmont St
314 St. Lawrence	Village of Massena	19 Chase St
315 St. Lawrence	Village of Massena	19 Cornell Ave
316 St. Lawrence	Village of Massena	19 Kennedy Ct
317 St. Lawrence	Village of Massena	19 Liberty Ave
318 St. Lawrence	Village of Massena	19 Monroe Pkwy
319 St. Lawrence	Village of Massena	19 Ober St
320 St. Lawrence	Village of Massena	19 Pleasant St
321 St. Lawrence	Village of Massena	19 Somerset Ave
322 St. Lawrence	Village of Massena	19 Spruce St
323 St. Lawrence	Village of Massena	19 Washington St
324 St. Lawrence	Village of Massena	190 Center St
325 St. Lawrence	Village of Massena	190 Jefferson Ave
326 St. Lawrence	Village of Massena	191 Center St
327 St. Lawrence	Village of Massena	192 Center St
328 St. Lawrence	Village of Massena	192 Jefferson Ave
329 St. Lawrence	Village of Massena	193 Center St
330 St. Lawrence	Village of Massena	194 Center St
331 St. Lawrence	Village of Massena	194 Jefferson Ave
332 St. Lawrence	Village of Massena	196 Center St
333 St. Lawrence	Village of Massena	196 Jefferson Ave
334 St. Lawrence	Village of Massena	197 Park Ave
335 St. Lawrence	Village of Massena	198 Jefferson Ave
336 St. Lawrence	Village of Massena	2 Belmont St
337 St. Lawrence	Village of Massena	2 Chase St
338 St. Lawrence	Village of Massena	2 Garfield Ave
339 St. Lawrence	Village of Massena	2 Kennedy Ct
340 St. Lawrence	Village of Massena	2 Madison Ave
341 St. Lawrence	Village of Massena	2 Monroe Pkwy
342 St. Lawrence	Village of Massena	2 Richards St
343 St. Lawrence	Village of Massena	2 Washington St
344 St. Lawrence	Village of Massena	2 Willow St
345 St. Lawrence	Village of Massena	20 Belmont St
346 St. Lawrence	Village of Massena	20 Chase St
347 St. Lawrence	Village of Massena	20 Madison Ave
348 St. Lawrence	Village of Massena	20 Monroe Pkwy
349 St. Lawrence	Village of Massena	20 Ober St
350 St. Lawrence	Village of Massena	20 Pleasant St
351 St. Lawrence	Village of Massena	20 Poplar St
352 St. Lawrence	Village of Massena	20 Spruce St

Environmental Justice Residents within Project Area

County	Municipality	Parcel Address
353 St. Lawrence	Village of Massena	20 Washington St
354 St. Lawrence	Village of Massena	200 Jefferson Ave
355 St. Lawrence	Village of Massena	201 Jefferson Ave
356 St. Lawrence	Village of Massena	202 Jefferson Ave
357 St. Lawrence	Village of Massena	203 Jefferson Ave
358 St. Lawrence	Village of Massena	204 Jefferson Ave
359 St. Lawrence	Village of Massena	206 Jefferson Ave
360 St. Lawrence	Village of Massena	208 Jefferson Ave
361 St. Lawrence	Village of Massena	209 Center St
362 St. Lawrence	Village of Massena	21 Belmont St
363 St. Lawrence	Village of Massena	21 Bishop Ave
364 St. Lawrence	Village of Massena	21 Chase St
365 St. Lawrence	Village of Massena	21 Kennedy Ct
366 St. Lawrence	Village of Massena	21 Liberty Ave
367 St. Lawrence	Village of Massena	21 Monroe Pkwy
368 St. Lawrence	Village of Massena	21 Ober St
369 St. Lawrence	Village of Massena	21 Pleasant St
370 St. Lawrence	Village of Massena	21 Spruce St
371 St. Lawrence	Village of Massena	21 Washington St
372 St. Lawrence	Village of Massena	210 Center St
373 St. Lawrence	Village of Massena	210 Jefferson Ave
374 St. Lawrence	Village of Massena	212 Jefferson Ave
375 St. Lawrence	Village of Massena	214 Jefferson Ave
376 St. Lawrence	Village of Massena	215 Jefferson Ave
377 St. Lawrence	Village of Massena	216 Jefferson Ave
378 St. Lawrence	Village of Massena	217 Center St
379 St. Lawrence	Village of Massena	217 Jefferson Ave
380 St. Lawrence	Village of Massena	218 Jefferson Ave
381 St. Lawrence	Village of Massena	219 Center St
382 St. Lawrence	Village of Massena	219 Jefferson Ave
383 St. Lawrence	Village of Massena	22 Ames St
384 St. Lawrence	Village of Massena	22 Belmont St
385 St. Lawrence	Village of Massena	22 Chase St
386 St. Lawrence	Village of Massena	22 Cornell Ave
387 St. Lawrence	Village of Massena	22 Monroe Pkwy
388 St. Lawrence	Village of Massena	22 Pleasant St
389 St. Lawrence	Village of Massena	22 Washington St
390 St. Lawrence	Village of Massena	220 Jefferson Ave
391 St. Lawrence	Village of Massena	221 Center St
392 St. Lawrence	Village of Massena	221 Jefferson Ave
393 St. Lawrence	Village of Massena	222 Jefferson Ave
394 St. Lawrence	Village of Massena	223 Jefferson Ave
395 St. Lawrence	Village of Massena	224 Center St
396 St. Lawrence	Village of Massena	224 Jefferson Ave

Environmental Justice Residents within Project Area

County	Municipality	Parcel Address
397 St. Lawrence	Village of Massena	226 Center St
398 St. Lawrence	Village of Massena	226 Jefferson Ave
399 St. Lawrence	Village of Massena	227 Center St
400 St. Lawrence	Village of Massena	228 Center St
401 St. Lawrence	Village of Massena	23 Ames St
402 St. Lawrence	Village of Massena	23 Belmont St
403 St. Lawrence	Village of Massena	23 Kennedy Ct
404 St. Lawrence	Village of Massena	23 Monroe Pkwy
405 St. Lawrence	Village of Massena	23 Ober St
406 St. Lawrence	Village of Massena	23 Pleasant St
407 St. Lawrence	Village of Massena	23 Roosevelt St
408 St. Lawrence	Village of Massena	23 Spruce St
409 St. Lawrence	Village of Massena	23 Washington St
410 St. Lawrence	Village of Massena	23 Woodlawn Ave
411 St. Lawrence	Village of Massena	230 Center St
412 St. Lawrence	Village of Massena	231 Center St
413 St. Lawrence	Village of Massena	233 1/2 Center St
414 St. Lawrence	Village of Massena	234 Center St
415 St. Lawrence	Village of Massena	238 Center St
416 St. Lawrence	Village of Massena	24 Ames St
417 St. Lawrence	Village of Massena	24 Chase St
418 St. Lawrence	Village of Massena	24 Monroe Pkwy
419 St. Lawrence	Village of Massena	24 Roosevelt St
420 St. Lawrence	Village of Massena	24 Washington St
421 St. Lawrence	Village of Massena	24 Woodlawn Ave
422 St. Lawrence	Village of Massena	242 Center St
423 St. Lawrence	Village of Massena	243 Center St
424 St. Lawrence	Village of Massena	244 Center St
425 St. Lawrence	Village of Massena	245 Center St
426 St. Lawrence	Village of Massena	246 Center St
427 St. Lawrence	Village of Massena	247 N Main St
428 St. Lawrence	Village of Massena	249 Center St
429 St. Lawrence	Village of Massena	249 N Main St
430 St. Lawrence	Village of Massena	25 Ames St
431 St. Lawrence	Village of Massena	25 Belmont St
432 St. Lawrence	Village of Massena	25 Kennedy Ct
433 St. Lawrence	Village of Massena	25 Monroe Pkwy
434 St. Lawrence	Village of Massena	25 Ober St
435 St. Lawrence	Village of Massena	25 Pleasant St
436 St. Lawrence	Village of Massena	25 Roosevelt St
437 St. Lawrence	Village of Massena	25 Spruce St
438 St. Lawrence	Village of Massena	25 Washington St
439 St. Lawrence	Village of Massena	250 Center St
440 St. Lawrence	Village of Massena	251 Center St

Environmental Justice Residents within Project Area

County	Municipality	Parcel Address
441 St. Lawrence	Village of Massena	251 N Main St
442 St. Lawrence	Village of Massena	252 Center St
443 St. Lawrence	Village of Massena	253 Center St
444 St. Lawrence	Village of Massena	253 N Main St
445 St. Lawrence	Village of Massena	254 Center St
446 St. Lawrence	Village of Massena	255 Center St
447 St. Lawrence	Village of Massena	255 N Main St
448 St. Lawrence	Village of Massena	257 Center St
449 St. Lawrence	Village of Massena	257 N Main St
450 St. Lawrence	Village of Massena	258 Center St
451 St. Lawrence	Village of Massena	259 Center St
452 St. Lawrence	Village of Massena	259 N Main St
453 St. Lawrence	Village of Massena	26 Ames St
454 St. Lawrence	Village of Massena	26 Monroe Pkwy
455 St. Lawrence	Village of Massena	26 Roosevelt St
456 St. Lawrence	Village of Massena	26 Washington St
457 St. Lawrence	Village of Massena	261 Center St
458 St. Lawrence	Village of Massena	261 N Main St
459 St. Lawrence	Village of Massena	263 N Main St
460 St. Lawrence	Village of Massena	27 Ames St
461 St. Lawrence	Village of Massena	27 Belmont St
462 St. Lawrence	Village of Massena	27 Bishop Ave
463 St. Lawrence	Village of Massena	27 Cornell Ave
464 St. Lawrence	Village of Massena	27 Kennedy Ct
465 St. Lawrence	Village of Massena	27 Monroe Pkwy
466 St. Lawrence	Village of Massena	27 Ober St
467 St. Lawrence	Village of Massena	27 Pleasant St
468 St. Lawrence	Village of Massena	27 Roosevelt St
469 St. Lawrence	Village of Massena	27 Somerset Ave
470 St. Lawrence	Village of Massena	27 Spruce St
471 St. Lawrence	Village of Massena	27 Washington St
472 St. Lawrence	Village of Massena	28 Cornell Ave
473 St. Lawrence	Village of Massena	28 Liberty Ave
474 St. Lawrence	Village of Massena	28 Ober St
475 St. Lawrence	Village of Massena	28 Pleasant St
476 St. Lawrence	Village of Massena	28 Roosevelt St
477 St. Lawrence	Village of Massena	28 Somerset Ave
478 St. Lawrence	Village of Massena	28 Spruce St
479 St. Lawrence	Village of Massena	28 Washington St
480 St. Lawrence	Village of Massena	29 Ames St
481 St. Lawrence	Village of Massena	29 Bishop Ave
482 St. Lawrence	Village of Massena	29 Cornell Ave
483 St. Lawrence	Village of Massena	29 Kennedy Ct
484 St. Lawrence	Village of Massena	29 Monroe Pkwy

Environmental Justice Residents within Project Area

County	Municipality	Parcel Address
485 St. Lawrence	Village of Massena	29 Ober St
486 St. Lawrence	Village of Massena	29 Roosevelt St
487 St. Lawrence	Village of Massena	29 Somerset Ave
488 St. Lawrence	Village of Massena	29 Spruce St
489 St. Lawrence	Village of Massena	29 Washington St
490 St. Lawrence	Village of Massena	3 Belmont St
491 St. Lawrence	Village of Massena	3 Bishop Ave
492 St. Lawrence	Village of Massena	3 Chase St
493 St. Lawrence	Village of Massena	3 Cooper St
494 St. Lawrence	Village of Massena	3 Franklin St
495 St. Lawrence	Village of Massena	3 Garfield Ave
496 St. Lawrence	Village of Massena	3 Kennedy Ct
497 St. Lawrence	Village of Massena	3 Liberty Ave
498 St. Lawrence	Village of Massena	3 Lincoln Dr
499 St. Lawrence	Village of Massena	3 Lombardo Ave
500 St. Lawrence	Village of Massena	3 Madison Ave
501 St. Lawrence	Village of Massena	3 Monroe Pkwy
502 St. Lawrence	Massena	3 Old River Rd
503 St. Lawrence	Village of Massena	3 Richards St
504 St. Lawrence	Village of Massena	3 Spruce St
505 St. Lawrence	Village of Massena	3 Sycamore St
506 St. Lawrence	Village of Massena	3 Washington St
507 St. Lawrence	Village of Massena	30 Belmont St
508 St. Lawrence	Village of Massena	30 Bishop Ave
509 St. Lawrence	Village of Massena	30 Cornell Ave
510 St. Lawrence	Village of Massena	30 Franklin St
511 St. Lawrence	Village of Massena	30 Pleasant St
512 St. Lawrence	Village of Massena	30 Roosevelt St
513 St. Lawrence	Village of Massena	30 Spruce St
514 St. Lawrence	Village of Massena	30 Washington St
515 St. Lawrence	Village of Massena	30 Woodlawn Ave
516 St. Lawrence	Village of Massena	31 Ames St
517 St. Lawrence	Village of Massena	31 Belmont St
518 St. Lawrence	Village of Massena	31 Bishop Ave
519 St. Lawrence	Village of Massena	31 Cornell Ave
520 St. Lawrence	Village of Massena	31 Kennedy Ct
521 St. Lawrence	Village of Massena	31 Liberty Ave
522 St. Lawrence	Village of Massena	31 Ober St
523 St. Lawrence	Village of Massena	31 Pleasant St
524 St. Lawrence	Village of Massena	31 Roosevelt St
525 St. Lawrence	Village of Massena	31 Somerset Ave
526 St. Lawrence	Village of Massena	31 Spruce St
527 St. Lawrence	Village of Massena	31 Sycamore St
528 St. Lawrence	Village of Massena	31 Washington St

Environmental Justice Residents within Project Area

County	Municipality	Parcel Address
529 St. Lawrence	Village of Massena	31 Willow St
530 St. Lawrence	Village of Massena	32 Ames St
531 St. Lawrence	Village of Massena	32 Bishop Ave
532 St. Lawrence	Village of Massena	32 Cornell Ave
533 St. Lawrence	Village of Massena	32 Roosevelt St
534 St. Lawrence	Village of Massena	32 Somerset Ave
535 St. Lawrence	Village of Massena	32 Spruce St
536 St. Lawrence	Village of Massena	32 Washington St
537 St. Lawrence	Village of Massena	32 Willow St
538 St. Lawrence	Village of Massena	32 Woodlawn Ave
539 St. Lawrence	Village of Massena	33 Ames St
540 St. Lawrence	Village of Massena	33 Belmont St
541 St. Lawrence	Village of Massena	33 Bishop Ave
542 St. Lawrence	Village of Massena	33 Cornell Ave
543 St. Lawrence	Village of Massena	33 Kennedy Ct
544 St. Lawrence	Village of Massena	33 Liberty Ave
545 St. Lawrence	Village of Massena	33 Roosevelt St
546 St. Lawrence	Village of Massena	33 Somerset Ave
547 St. Lawrence	Village of Massena	33 Spruce St
548 St. Lawrence	Village of Massena	33 Washington St
549 St. Lawrence	Village of Massena	34 Ames St
550 St. Lawrence	Village of Massena	34 Bishop Ave
551 St. Lawrence	Village of Massena	34 Cornell Ave
552 St. Lawrence	Village of Massena	34 Roosevelt St
553 St. Lawrence	Village of Massena	34 Spruce St
554 St. Lawrence	Village of Massena	34 Washington St
555 St. Lawrence	Massena	345 Pontoon Bridge Rd
556 St. Lawrence	Village of Massena	35 Ames St
557 St. Lawrence	Village of Massena	35 Belmont St
558 St. Lawrence	Village of Massena	35 Bishop Ave
559 St. Lawrence	Village of Massena	35 Cornell Ave
560 St. Lawrence	Village of Massena	35 Kennedy Ct
561 St. Lawrence	Village of Massena	35 Liberty Ave
562 St. Lawrence	Village of Massena	35 Roosevelt St
563 St. Lawrence	Village of Massena	35 Somerset Ave
564 St. Lawrence	Village of Massena	35 Spruce St
565 St. Lawrence	Village of Massena	35 Washington St
566 St. Lawrence	Village of Massena	36 Ames St Apt 1&2
567 St. Lawrence	Village of Massena	36 Bishop Ave
568 St. Lawrence	Village of Massena	36 Cornell Ave
569 St. Lawrence	Village of Massena	36 Roosevelt St
570 St. Lawrence	Village of Massena	36 Spruce St
571 St. Lawrence	Village of Massena	36 Washington St
572 St. Lawrence	Village of Massena	37 Ames St

Environmental Justice Residents within Project Area

County	Municipality	Parcel Address
573 St. Lawrence	Village of Massena	37 Belmont St
574 St. Lawrence	Village of Massena	37 Bishop Ave
575 St. Lawrence	Village of Massena	37 Liberty Ave
576 St. Lawrence	Village of Massena	37 Roosevelt St
577 St. Lawrence	Village of Massena	37 Somerset Ave
578 St. Lawrence	Village of Massena	37 Spruce St
579 St. Lawrence	Village of Massena	38 Ames St
580 St. Lawrence	Village of Massena	38 Beach St
581 St. Lawrence	Village of Massena	38 Belmont St
582 St. Lawrence	Village of Massena	38 Bishop Ave
583 St. Lawrence	Village of Massena	38 Cornell Ave
584 St. Lawrence	Massena	38 Old River Rd Lot 1
585 St. Lawrence	Village of Massena	38 Roosevelt St
586 St. Lawrence	Village of Massena	38 Spruce St
587 St. Lawrence	Village of Massena	38 Washington St
588 St. Lawrence	Village of Massena	38 Willow St
589 St. Lawrence	Village of Massena	39 Belmont St
590 St. Lawrence	Village of Massena	39 Bishop Ave
591 St. Lawrence	Village of Massena	39 Liberty Ave
592 St. Lawrence	Village of Massena	39 Roosevelt St
593 St. Lawrence	Village of Massena	39 Somerset Ave
594 St. Lawrence	Village of Massena	39 Spruce St
595 St. Lawrence	Village of Massena	4 Belmont St
596 St. Lawrence	Village of Massena	4 Chase St
597 St. Lawrence	Village of Massena	4 Garfield Ave
598 St. Lawrence	Village of Massena	4 Kennedy Ct
599 St. Lawrence	Village of Massena	4 Lombardo Ave
600 St. Lawrence	Village of Massena	4 Madison Ave
601 St. Lawrence	Village of Massena	4 Monroe Pkwy
602 St. Lawrence	Village of Massena	4 Washington St
603 St. Lawrence	Village of Massena	40 Ames St
604 St. Lawrence	Village of Massena	40 Beach St
605 St. Lawrence	Village of Massena	40 Belmont St
606 St. Lawrence	Village of Massena	40 Bishop Ave
607 St. Lawrence	Village of Massena	40 Cornell Ave
608 St. Lawrence	Massena	40 Old River Rd Lot 2
609 St. Lawrence	Village of Massena	40 Roosevelt St
610 St. Lawrence	Village of Massena	40 Washington St
611 St. Lawrence	Village of Massena	40 Willow St
612 St. Lawrence	Village of Massena	41 Ames St
613 St. Lawrence	Village of Massena	41 Belmont St
614 St. Lawrence	Village of Massena	41 Bishop Ave
615 St. Lawrence	Village of Massena	41 Liberty Ave
616 St. Lawrence	Village of Massena	41 Roosevelt St

Environmental Justice Residents within Project Area

County	Municipality	Parcel Address
617 St. Lawrence	Village of Massena	41 Somerset Ave
618 St. Lawrence	Village of Massena	41 Spruce St
619 St. Lawrence	Village of Massena	41 Sycamore St
620 St. Lawrence	Village of Massena	42 Beach St
621 St. Lawrence	Village of Massena	42 Belmont St
622 St. Lawrence	Village of Massena	42 Bishop Ave
623 St. Lawrence	Village of Massena	42 Cornell Ave
624 St. Lawrence	Village of Massena	42 Roosevelt St
625 St. Lawrence	Village of Massena	42 Washington St
626 St. Lawrence	Village of Massena	42 Willow St
627 St. Lawrence	Village of Massena	43 Roosevelt St
628 St. Lawrence	Village of Massena	43 Spruce St
629 St. Lawrence	Village of Massena	43 Willow St
630 St. Lawrence	Village of Massena	44 Beach St
631 St. Lawrence	Village of Massena	44 Belmont St
632 St. Lawrence	Village of Massena	44 Bishop Ave
633 St. Lawrence	Village of Massena	44 Cornell Ave
634 St. Lawrence	Village of Massena	44 Roosevelt St
635 St. Lawrence	Village of Massena	45 Chase St
636 St. Lawrence	Massena	45 Cr 42 & 1814 Sh 131,85,205 Whe
637 St. Lawrence	Village of Massena	45 Roosevelt St
638 St. Lawrence	Village of Massena	45 Somerset Ave
639 St. Lawrence	Village of Massena	45 Spruce St
640 St. Lawrence	Village of Massena	45 Willow St
641 St. Lawrence	Village of Massena	46 Beach St
642 St. Lawrence	Village of Massena	46 Belmont St
643 St. Lawrence	Village of Massena	46 Bishop Ave
644 St. Lawrence	Village of Massena	46 Cooper St
645 St. Lawrence	Village of Massena	46 Roosevelt St
646 St. Lawrence	Village of Massena	46 Willow St
647 St. Lawrence	Village of Massena	46 Woodlawn Ave
648 St. Lawrence	Village of Massena	47 Roosevelt St
649 St. Lawrence	Village of Massena	47 Spruce St
650 St. Lawrence	Village of Massena	47 Willow St
651 St. Lawrence	Village of Massena	48 Beach St
652 St. Lawrence	Village of Massena	48 Roosevelt St
653 St. Lawrence	Village of Massena	48 Willow St
654 St. Lawrence	Village of Massena	48 Woodlawn Ave
655 St. Lawrence	Village of Massena	49 Roosevelt St
656 St. Lawrence	Village of Massena	49 Somerset Ave
657 St. Lawrence	Village of Massena	5 Belmont St
658 St. Lawrence	Village of Massena	5 Bishop Ave
659 St. Lawrence	Village of Massena	5 Chase St
660 St. Lawrence	Village of Massena	5 Garfield Ave

Environmental Justice Residents within Project Area

County	Municipality	Parcel Address
661 St. Lawrence	Village of Massena	5 Kennedy Ct
662 St. Lawrence	Village of Massena	5 Madison Ave
663 St. Lawrence	Village of Massena	5 Monroe Pkwy
664 St. Lawrence	Village of Massena	5 Ober St
665 St. Lawrence	Massena	5 Old River Rd
666 St. Lawrence	Village of Massena	5 Richards St
667 St. Lawrence	Village of Massena	5 Somerset Ave
668 St. Lawrence	Village of Massena	5 Spruce St
669 St. Lawrence	Village of Massena	5 Washington St
670 St. Lawrence	Village of Massena	50 Beach St
671 St. Lawrence	Massena	50 Old River Rd
672 St. Lawrence	Village of Massena	50 Roosevelt St
673 St. Lawrence	Village of Massena	51 Liberty Ave
674 St. Lawrence	Village of Massena	51 Roosevelt St
675 St. Lawrence	Village of Massena	51 Somerset Ave
676 St. Lawrence	Village of Massena	51 Spruce St
677 St. Lawrence	Village of Massena	52 Ames St
678 St. Lawrence	Village of Massena	52 Beach St
679 St. Lawrence	Village of Massena	52 Bishop Ave
680 St. Lawrence	Village of Massena	52 Cornell Ave
681 St. Lawrence	Village of Massena	52 Roosevelt St
682 St. Lawrence	Village of Massena	53 Chase St
683 St. Lawrence	Village of Massena	53 Liberty Ave
684 St. Lawrence	Village of Massena	53 Roosevelt St
685 St. Lawrence	Village of Massena	53 Somerset Ave
686 St. Lawrence	Village of Massena	53 Sycamore St
687 St. Lawrence	Village of Massena	53 Willow St
688 St. Lawrence	Village of Massena	54 Ames St
689 St. Lawrence	Village of Massena	54 Beach St
690 St. Lawrence	Village of Massena	54 Bishop Ave
691 St. Lawrence	Village of Massena	54 Cornell Ave
692 St. Lawrence	Village of Massena	54 Roosevelt St
693 St. Lawrence	Village of Massena	54 Willow St
694 St. Lawrence	Village of Massena	54 Woodlawn Ave
695 St. Lawrence	Massena	544 Pontoon Bridge Rd
696 St. Lawrence	Massena	548 Pontoon Bridge Rd
697 St. Lawrence	Village of Massena	55 Chase St
698 St. Lawrence	Village of Massena	55 Liberty Ave
699 St. Lawrence	Village of Massena	55 Roosevelt St
700 St. Lawrence	Village of Massena	55 Somerset Ave
701 St. Lawrence	Massena	554 Pontoon Bridge Rd
702 St. Lawrence	Village of Massena	56 Beach St
703 St. Lawrence	Village of Massena	56 Bishop Ave
704 St. Lawrence	Village of Massena	56 Cornell Ave

Environmental Justice Residents within Project Area

County	Municipality	Parcel Address
705 St. Lawrence	Village of Massena	56 Liberty Ave
706 St. Lawrence	Village of Massena	56 Roosevelt St
707 St. Lawrence	Village of Massena	56 Willow & 20 Woodlawn Av
708 St. Lawrence	Village of Massena	56 Woodlawn Ave
709 St. Lawrence	Village of Massena	57 Bishop Ave
710 St. Lawrence	Village of Massena	57 Liberty Ave
711 St. Lawrence	Massena	57 Old River Rd
712 St. Lawrence	Village of Massena	57 Roosevelt St
713 St. Lawrence	Village of Massena	57 Somerset Ave
714 St. Lawrence	Village of Massena	58 Ames St
715 St. Lawrence	Village of Massena	58 Beach St
716 St. Lawrence	Village of Massena	58 Bishop Ave
717 St. Lawrence	Village of Massena	58 Cornell Ave
718 St. Lawrence	Massena	58 Old River Rd
719 St. Lawrence	Village of Massena	58 Roosevelt St
720 St. Lawrence	Village of Massena	58 Willow St Ste 1 & 2
721 St. Lawrence	Village of Massena	58 Woodlawn Ave
722 St. Lawrence	Village of Massena	59 Bishop Ave
723 St. Lawrence	Village of Massena	59 Liberty Ave
724 St. Lawrence	Village of Massena	59 Roosevelt St
725 St. Lawrence	Village of Massena	59 Somerset Ave
726 St. Lawrence	Village of Massena	6 Belmont St
727 St. Lawrence	Village of Massena	6 Bishop Ave
728 St. Lawrence	Village of Massena	6 Chase St
729 St. Lawrence	Village of Massena	6 Cornell Ave
730 St. Lawrence	Massena	6 Cr 42
731 St. Lawrence	Village of Massena	6 Garfield Ave
732 St. Lawrence	Village of Massena	6 Kennedy Ct
733 St. Lawrence	Village of Massena	6 Madison Ave
734 St. Lawrence	Village of Massena	6 Monroe Pkwy
735 St. Lawrence	Village of Massena	6 Richards St
736 St. Lawrence	Village of Massena	6 Somerset Ave
737 St. Lawrence	Village of Massena	6 Washington St
738 St. Lawrence	Village of Massena	6 Woodlawn Ave
739 St. Lawrence	Village of Massena	60 Ames St
740 St. Lawrence	Village of Massena	60 Beach St
741 St. Lawrence	Village of Massena	60 Cornell Ave
742 St. Lawrence	Village of Massena	60 Liberty Ave
743 St. Lawrence	Village of Massena	60 Roosevelt St
744 St. Lawrence	Village of Massena	60 Woodlawn Ave
745 St. Lawrence	Village of Massena	61 Ames St
746 St. Lawrence	Village of Massena	61 Bishop Ave
747 St. Lawrence	Village of Massena	61 Chase St
748 St. Lawrence	Village of Massena	61 Liberty Ave

Environmental Justice Residents within Project Area

County	Municipality	Parcel Address
749 St. Lawrence	Village of Massena	61 Roosevelt St
750 St. Lawrence	Village of Massena	62 Ames St
751 St. Lawrence	Village of Massena	62 Beach St
752 St. Lawrence	Village of Massena	62 Bishop Ave
753 St. Lawrence	Village of Massena	62 Cornell Ave
754 St. Lawrence	Village of Massena	62 Liberty Ave
755 St. Lawrence	Village of Massena	62 Roosevelt St
756 St. Lawrence	Village of Massena	62 Spruce St
757 St. Lawrence	Village of Massena	62 Sycamore St
758 St. Lawrence	Village of Massena	62 Woodlawn Ave
759 St. Lawrence	Village of Massena	63 Ames St
760 St. Lawrence	Village of Massena	63 Bishop Ave
761 St. Lawrence	Village of Massena	63 Chase St
762 St. Lawrence	Village of Massena	63 Liberty Ave
763 St. Lawrence	Village of Massena	63 Roosevelt St
764 St. Lawrence	Village of Massena	64 Ames St
765 St. Lawrence	Village of Massena	64 Beach St
766 St. Lawrence	Village of Massena	64 Bishop Ave
767 St. Lawrence	Village of Massena	64 Chase St
768 St. Lawrence	Village of Massena	64 Cornell Ave
769 St. Lawrence	Village of Massena	64 Franklin St
770 St. Lawrence	Village of Massena	64 Liberty Ave
771 St. Lawrence	Village of Massena	64 Roosevelt St
772 St. Lawrence	Village of Massena	64 Woodlawn Ave
773 St. Lawrence	Village of Massena	65 Ames St
774 St. Lawrence	Village of Massena	65 Bishop Ave
775 St. Lawrence	Village of Massena	65 Chase St
776 St. Lawrence	Village of Massena	65 Liberty Ave
777 St. Lawrence	Village of Massena	65 Ober St
778 St. Lawrence	Village of Massena	65 Roosevelt St
779 St. Lawrence	Village of Massena	66 Ames St
780 St. Lawrence	Village of Massena	66 Bishop Ave
781 St. Lawrence	Village of Massena	66 Chase St
782 St. Lawrence	Village of Massena	66 Cornell Ave
783 St. Lawrence	Village of Massena	66 Liberty Ave
784 St. Lawrence	Village of Massena	66 Ober St
785 St. Lawrence	Village of Massena	66 Roosevelt St
786 St. Lawrence	Village of Massena	66 Woodlawn Ave
787 St. Lawrence	Village of Massena	66,68,70 Willow St
788 St. Lawrence	Village of Massena	67 Ames St
789 St. Lawrence	Village of Massena	67 Bishop Ave
790 St. Lawrence	Village of Massena	67 Chase St
791 St. Lawrence	Village of Massena	67 Liberty Ave
792 St. Lawrence	Village of Massena	67 Ober St

Environmental Justice Residents within Project Area

County	Municipality	Parcel Address
793 St. Lawrence	Village of Massena	68 Ames St
794 St. Lawrence	Village of Massena	68 Beach St
795 St. Lawrence	Village of Massena	68 Bishop Ave
796 St. Lawrence	Village of Massena	68 Chase St
797 St. Lawrence	Village of Massena	68 Cornell Ave
798 St. Lawrence	Village of Massena	68 Liberty Ave
799 St. Lawrence	Village of Massena	68 Ober St
800 St. Lawrence	Village of Massena	69 Ames St
801 St. Lawrence	Village of Massena	69 Bishop Ave
802 St. Lawrence	Village of Massena	69 Chase St
803 St. Lawrence	Village of Massena	69 Ober St
804 St. Lawrence	Massena	69 Old River Rd
805 St. Lawrence	Village of Massena	7 Belmont St
806 St. Lawrence	Village of Massena	7 Bishop Ave
807 St. Lawrence	Village of Massena	7 Chase St
808 St. Lawrence	Village of Massena	7 Cornell Ave
809 St. Lawrence	Massena	7 Cr 42
810 St. Lawrence	Village of Massena	7 Garfield Ave
811 St. Lawrence	Village of Massena	7 Kennedy Ct
812 St. Lawrence	Village of Massena	7 Liberty Ave
813 St. Lawrence	Village of Massena	7 Madison Ave
814 St. Lawrence	Village of Massena	7 Maiden Ln
815 St. Lawrence	Village of Massena	7 Monroe Pkwy
816 St. Lawrence	Village of Massena	7 Ober St
817 St. Lawrence	Massena	7 Old River Rd
818 St. Lawrence	Village of Massena	7 Pleasant St
819 St. Lawrence	Village of Massena	7 Richards St
820 St. Lawrence	Village of Massena	7 Somerset Ave
821 St. Lawrence	Village of Massena	7 Spruce St
822 St. Lawrence	Village of Massena	7 Washington St
823 St. Lawrence	Village of Massena	7 Woodlawn Ave
824 St. Lawrence	Village of Massena	70 Ames St
825 St. Lawrence	Village of Massena	70 Beach St
826 St. Lawrence	Village of Massena	70 Chase St
827 St. Lawrence	Village of Massena	70 Cornell Ave
828 St. Lawrence	Village of Massena	70 Liberty Ave
829 St. Lawrence	Village of Massena	70 Ober St
830 St. Lawrence	Massena	70 Old River Rd
831 St. Lawrence	Massena	70 Old River Rd
832 St. Lawrence	Village of Massena	70 Park Ave
833 St. Lawrence	Village of Massena	71 Ames St
834 St. Lawrence	Village of Massena	71 Bishop Ave
835 St. Lawrence	Village of Massena	71 Chase St
836 St. Lawrence	Village of Massena	71 Ober St

Environmental Justice Residents within Project Area

County	Municipality	Parcel Address
837 St. Lawrence	Village of Massena	72 Ames St
838 St. Lawrence	Village of Massena	72 Beach St
839 St. Lawrence	Village of Massena	72 Chase St
840 St. Lawrence	Village of Massena	72 Cornell Ave
841 St. Lawrence	Village of Massena	72 Liberty Ave
842 St. Lawrence	Village of Massena	72 Ober St
843 St. Lawrence	Village of Massena	72 Woodlawn 3 & 5 Cedar
844 St. Lawrence	Village of Massena	73 Ames St
845 St. Lawrence	Village of Massena	73 Bishop Ave
846 St. Lawrence	Village of Massena	73 Chase St
847 St. Lawrence	Village of Massena	73 Ober St
848 St. Lawrence	Village of Massena	73 Spruce St
849 St. Lawrence	Village of Massena	74 Ames St
850 St. Lawrence	Village of Massena	74 Beach St
851 St. Lawrence	Village of Massena	74 Chase St
852 St. Lawrence	Village of Massena	74 Cornell Ave
853 St. Lawrence	Village of Massena	74 Liberty Ave
854 St. Lawrence	Village of Massena	74 Ober St
855 St. Lawrence	Village of Massena	74 Woodlawn Ave
856 St. Lawrence	Village of Massena	75 Ames St
857 St. Lawrence	Village of Massena	75 Chase St
858 St. Lawrence	Massena	75 Club House Rd/Prvt
859 St. Lawrence	Village of Massena	75 Ober St
860 St. Lawrence	Village of Massena	75 Stoughton Ave
861 St. Lawrence	Village of Massena	76 Ames St
862 St. Lawrence	Village of Massena	76 Chase St
863 St. Lawrence	Village of Massena	76 Cornell Ave
864 St. Lawrence	Village of Massena	76 Liberty Ave
865 St. Lawrence	Village of Massena	76 Ober St
866 St. Lawrence	Village of Massena	76 Woodlawn Ave
867 St. Lawrence	Village of Massena	77 Chase St
868 St. Lawrence	Village of Massena	77 Jefferson Ave
869 St. Lawrence	Village of Massena	77 Liberty Ave
870 St. Lawrence	Village of Massena	77 Ober St
871 St. Lawrence	Massena	77 Old River Rd
872 St. Lawrence	Village of Massena	77 Stoughton Ave
873 St. Lawrence	Village of Massena	78 Beach St
874 St. Lawrence	Village of Massena	78 Chase St
875 St. Lawrence	Village of Massena	78 Liberty Ave
876 St. Lawrence	Village of Massena	78 Stoughton Ave
877 St. Lawrence	Village of Massena	78 Woodlawn Ave
878 St. Lawrence	Village of Massena	79 Chase St
879 St. Lawrence	Village of Massena	79 Liberty Ave
880 St. Lawrence	Village of Massena	79 Ober St

Environmental Justice Residents within Project Area

County	Municipality	Parcel Address
881 St. Lawrence	Village of Massena	79 Stoughton Ave
882 St. Lawrence	Village of Massena	8 Belmont St
883 St. Lawrence	Village of Massena	8 Bishop Ave
884 St. Lawrence	Village of Massena	8 Cornell Ave
885 St. Lawrence	Village of Massena	8 Garfield Ave
886 St. Lawrence	Village of Massena	8 Kennedy Ct
887 St. Lawrence	Village of Massena	8 Madison Ave
888 St. Lawrence	Village of Massena	8 Monroe Pkwy
889 St. Lawrence	Village of Massena	8 Pleasant St
890 St. Lawrence	Village of Massena	8 Richards St
891 St. Lawrence	Village of Massena	8 Somerset Ave
892 St. Lawrence	Village of Massena	8 Washington St
893 St. Lawrence	Village of Massena	80 Bishop Ave
894 St. Lawrence	Village of Massena	80 Chase St
895 St. Lawrence	Village of Massena	80 Liberty Ave
896 St. Lawrence	Village of Massena	80 Stoughton Ave
897 St. Lawrence	Village of Massena	80 Woodlawn Ave
898 St. Lawrence	Village of Massena	81 Chase St
899 St. Lawrence	Village of Massena	81 Jefferson Ave
900 St. Lawrence	Village of Massena	81 Liberty Ave
901 St. Lawrence	Village of Massena	81 Ober St
902 St. Lawrence	Village of Massena	82 Chase St
903 St. Lawrence	Village of Massena	82 Liberty Ave
904 St. Lawrence	Village of Massena	82 Stoughton Ave
905 St. Lawrence	Village of Massena	83 Jefferson Ave
906 St. Lawrence	Village of Massena	83 Liberty Ave
907 St. Lawrence	Village of Massena	83 Ober St
908 St. Lawrence	Massena	83 Old River Rd
909 St. Lawrence	Village of Massena	83 Stoughton Ave
910 St. Lawrence	Village of Massena	84 Chase St
911 St. Lawrence	Village of Massena	84 Liberty Ave
912 St. Lawrence	Village of Massena	84 Ober St
913 St. Lawrence	Village of Massena	84 Stoughton Ave
914 St. Lawrence	Village of Massena	85 Jefferson Ave
915 St. Lawrence	Village of Massena	85 Liberty Ave
916 St. Lawrence	Village of Massena	85 Ober St
917 St. Lawrence	Village of Massena	85 Stoughton Ave
918 St. Lawrence	Village of Massena	86 Liberty Ave
919 St. Lawrence	Village of Massena	86 Stoughton Ave
920 St. Lawrence	Village of Massena	87 Jefferson Ave
921 St. Lawrence	Village of Massena	87 Liberty Ave
922 St. Lawrence	Village of Massena	87 Ober St
923 St. Lawrence	Village of Massena	87 Stoughton Ave
924 St. Lawrence	Village of Massena	88 Liberty Ave

Environmental Justice Residents within Project Area

County	Municipality	Parcel Address
925 St. Lawrence	Village of Massena	88 Stoughton Ave
926 St. Lawrence	Village of Massena	88 Woodlawn Ave
927 St. Lawrence	Village of Massena	89 Jefferson Ave
928 St. Lawrence	Village of Massena	89 Ober St
929 St. Lawrence	Massena	89 Old River Rd
930 St. Lawrence	Village of Massena	89 Stoughton Ave
931 St. Lawrence	Village of Massena	9 Belmont St
932 St. Lawrence	Village of Massena	9 Bishop Ave
933 St. Lawrence	Village of Massena	9 Chase St
934 St. Lawrence	Village of Massena	9 Cornell Ave
935 St. Lawrence	Village of Massena	9 Garfield Ave
936 St. Lawrence	Village of Massena	9 Kennedy Ct
937 St. Lawrence	Village of Massena	9 Liberty Ave
938 St. Lawrence	Village of Massena	9 Monroe Pkwy
939 St. Lawrence	Village of Massena	9 Pleasant St
940 St. Lawrence	Village of Massena	9 Richards St
941 St. Lawrence	Village of Massena	9 Somerset Ave
942 St. Lawrence	Village of Massena	9 Syakos Pl /235 Center St
943 St. Lawrence	Village of Massena	9 Washington St
944 St. Lawrence	Village of Massena	9 Woodlawn Ave
945 St. Lawrence	Village of Massena	90 Liberty Ave
946 St. Lawrence	Village of Massena	90 Stoughton Ave
947 St. Lawrence	Village of Massena	91 Jefferson Ave
948 St. Lawrence	Village of Massena	91 Stoughton Ave
949 St. Lawrence	Village of Massena	92 Liberty Ave
950 St. Lawrence	Village of Massena	92 Stoughton Ave
951 St. Lawrence	Village of Massena	93 Jefferson Ave
952 St. Lawrence	Village of Massena	93 Stoughton Ave
953 St. Lawrence	Village of Massena	94 Liberty Ave
954 St. Lawrence	Village of Massena	94 Stoughton Ave
955 St. Lawrence	Village of Massena	95 Jefferson Ave
956 St. Lawrence	Village of Massena	95 Stoughton Ave
957 St. Lawrence	Village of Massena	96 Beach St
958 St. Lawrence	Village of Massena	96 Liberty Ave
959 St. Lawrence	Village of Massena	96 Stoughton Ave
960 St. Lawrence	Village of Massena	96 Woodlawn Ave
961 St. Lawrence	Village of Massena	97 Jefferson Ave
962 St. Lawrence	Village of Massena	97 Liberty Ave
963 St. Lawrence	Village of Massena	97 Stoughton Ave
964 St. Lawrence	Village of Massena	98 Liberty Ave
965 St. Lawrence	Village of Massena	98 Stoughton Ave
966 St. Lawrence	Village of Massena	99 Jefferson Ave
967 St. Lawrence	Village of Massena	99 Liberty Ave
968 St. Lawrence	Village of Massena	99 Stoughton Ave

Environmental Justice Residents within Project Area

County	Municipality	Parcel Address
969 St. Lawrence	Village of Massena	Ames St
970 St. Lawrence	Village of Massena	Ames St
971 St. Lawrence	Village of Massena	Ames St
972 St. Lawrence	Village of Massena	Bishop Ave
973 St. Lawrence	Village of Massena	Bishop Ave
974 St. Lawrence	Village of Massena	Bishop Ave
975 St. Lawrence	Village of Massena	Bishop Ave
976 St. Lawrence	Village of Massena	Bishop Ave
977 St. Lawrence	Village of Massena	Bishop Ave & 26 Spruce St
978 St. Lawrence	Village of Massena	Cedar St
979 St. Lawrence	Village of Massena	Cedar St
980 St. Lawrence	Village of Massena	Center St
981 St. Lawrence	Village of Massena	Center St
982 St. Lawrence	Village of Massena	Center St
983 St. Lawrence	Village of Massena	Center St
984 St. Lawrence	Village of Massena	Center St
985 St. Lawrence	Village of Massena	Center St
986 St. Lawrence	Village of Massena	Center St
987 St. Lawrence	Village of Massena	Chase St
988 St. Lawrence	Village of Massena	Cooper St
989 St. Lawrence	Village of Massena	Cornell Ave
990 St. Lawrence	Village of Massena	Cornell Ave
991 St. Lawrence	Village of Massena	Cornell Ave
992 St. Lawrence	Village of Massena	Cornell Ave
993 St. Lawrence	Village of Massena	Cornell Ave
994 St. Lawrence	Massena	CR 42
995 St. Lawrence	Massena	Cr 42
996 St. Lawrence	Massena	E Orvis St
997 St. Lawrence	Massena	GRASSE RIVER
998 St. Lawrence	Village of Massena	GRASSE RIVER
999 St. Lawrence	Village of Massena	Jefferson Ave
1000 St. Lawrence	Village of Massena	Jefferson Ave
1001 St. Lawrence	Village of Massena	Kennedy Ct
1002 St. Lawrence	Massena	Leasd Alcoa Land
1003 St. Lawrence	Massena	Liberty Ave
1004 St. Lawrence	Massena	Liberty Ave
1005 St. Lawrence	Massena	Liberty Ave
1006 St. Lawrence	Massena	Liberty Ave
1007 St. Lawrence	Massena	Liberty Ave
1008 St. Lawrence	Village of Massena	Liberty Ave
1009 St. Lawrence	Village of Massena	Liberty Ave
1010 St. Lawrence	Village of Massena	Liberty Ave
1011 St. Lawrence	Village of Massena	Liberty Ave
1012 St. Lawrence	Village of Massena	Liberty Ave

Environmental Justice Residents within Project Area

County	Municipality	Parcel Address
1013	St. Lawrence	Village of Massena Liberty Ave
1014	St. Lawrence	Village of Massena Lombardo Ave
1015	St. Lawrence	Village of Massena Lombardo Ave
1016	St. Lawrence	Village of Massena McKinley Ave
1017	St. Lawrence	Village of Massena Mtrr R.o.w.,n Of Jeff Ave
1018	St. Lawrence	Village of Massena N Jeff Ave
1019	St. Lawrence	Village of Massena N Of Jefferson Ave
1020	St. Lawrence	Village of Massena N. Of Jefferson Ave
1021	St. Lawrence	Massena New Grasse Riv Substation
1022	St. Lawrence	Village of Massena Ober St
1023	St. Lawrence	Village of Massena Ober St
1024	St. Lawrence	Village of Massena Ober St
1025	St. Lawrence	Massena Old River Rd
1026	St. Lawrence	Massena Old River Rd
1027	St. Lawrence	Massena Old River Rd
1028	St. Lawrence	Massena Old River Rd
1029	St. Lawrence	Massena Old River Rd
1030	St. Lawrence	Massena Old River Rd
1031	St. Lawrence	Massena Old River Rd
1032	St. Lawrence	Massena Old River Rd (Off)
1033	St. Lawrence	Village of Massena Park Ave
1034	St. Lawrence	Village of Massena Park Ave
1035	St. Lawrence	Village of Massena Park Ave
1036	St. Lawrence	Village of Massena Park Ave
1037	St. Lawrence	Village of Massena Park Ave
1038	St. Lawrence	Village of Massena Park Ave
1039	St. Lawrence	Village of Massena Pleasant St
1040	St. Lawrence	Massena Pontoon Bridge Rd
1041	St. Lawrence	Massena Pontoon Bridge Rd
1042	St. Lawrence	Massena Pontoon Bridge Rd
1043	St. Lawrence	Massena Pontoon Bridge Rd
1044	St. Lawrence	Massena Pontoon Bridge Rd
1045	St. Lawrence	Massena Pontoon Bridge Rd
1046	St. Lawrence	Massena Pontoon Bridge Rd
1047	St. Lawrence	Massena Pontoon Bridge Rd
1048	St. Lawrence	Village of Massena Poplar St
1049	St. Lawrence	Massena Private Rd
1050	St. Lawrence	Village of Massena Rail Row N. Of Jeff Ave
1051	St. Lawrence	Village of Massena Richards St
1052	St. Lawrence	Village of Massena Richards St
1053	St. Lawrence	Village of Massena S End Of M.t.r.r. Brg
1054	St. Lawrence	Village of Massena S. Off Syakos Pl
1055	St. Lawrence	Massena SH 131
1056	St. Lawrence	Massena Sh 131

Environmental Justice Residents within Project Area

County	Municipality	Parcel Address
1057	St. Lawrence	Massena SH 131
1058	St. Lawrence	Massena Sh 131
1059	St. Lawrence	Massena Sh 131
1060	St. Lawrence	Village of Massena Somerset Ave
1061	St. Lawrence	Village of Massena Somerset Ave
1062	St. Lawrence	Village of Massena Somerset Ave
1063	St. Lawrence	Village of Massena Spruce St
1064	St. Lawrence	Village of Massena Spruce St
1065	St. Lawrence	Village of Massena Spruce St
1066	St. Lawrence	Massena ST. LAWRENCE RIVER
1067	St. Lawrence	Village of Massena Sycamore St
1068	St. Lawrence	Village of Massena Sycamore St
1069	St. Lawrence	Village of Massena Sycamore St
1070	St. Lawrence	Village of Massena Sycamore St
1071	St. Lawrence	Village of Massena Sycamore St
1072	St. Lawrence	Village of Massena Sycamore St
1073	St. Lawrence	Village of Massena Sycamore St
1074	St. Lawrence	Village of Massena Sycamore St
1075	St. Lawrence	Village of Massena Sycamore St
1076	St. Lawrence	Village of Massena Sycamore St
1077	St. Lawrence	Village of Massena Sycamore St / 98 Woodlawn Ave
1078	St. Lawrence	Village of Massena Willow St
1079	St. Lawrence	Village of Massena Willow St
1080	St. Lawrence	Village of Massena Willow St
1081	St. Lawrence	Village of Massena Willow St
1082	St. Lawrence	Village of Massena Willow St
1083	St. Lawrence	Village of Massena Willow St
1084	St. Lawrence	Village of Massena Willow St
1085	St. Lawrence	Village of Massena Willow St
1086	St. Lawrence	Village of Massena Willow St
1087	St. Lawrence	Village of Massena Woodlawn Ave
1088	St. Lawrence	Village of Massena Woodlawn Ave
1089	St. Lawrence	Village of Massena Woodlawn Ave
1090	St. Lawrence	Village of Massena Woodlawn Ave
1091	St. Lawrence	Village of Massena Woodlawn Ave
1092	St. Lawrence	Village of Massena Woodlawn Ave
1093	St. Lawrence	Village of Massena Woodlawn Ave

APPENDIX B
Public Meeting Notice

Massena Green Hydrogen Facility



PUBLIC INFORMATION MEETING

Please join us...

DATE: July 12, 2023

TIME: 4 – 5:30 p.m. In-Person
6 – 7 p.m. Virtual

LOCATION: Massena Town Hall
Room 30
60 Main Street
Massena, NY 13662

VIRTUAL LINK: www.zoom.com


Meeting ID: 964 2773 3577

Passcode: 981751

PROPOSED PROJECT

Air Products and Chemicals has proposed the construction of a green-hydrogen facility in the town of Massena, NY. The facility will produce liquid-hydrogen through electrolysis using hydro-electric power. In accordance with New York State Department of Environmental Conservation regulations, the company is hosting a public meeting to inform the community about the project and provide residents an opportunity to ask questions.

- ❖ Learn about the Massena Green Hydrogen facility
- ❖ Speak with representatives from Air Products
- ❖ Have your questions answered
- ❖ Share your comments about the project



Project Information:

<https://www.cscos.com/massena-green-hydrogen-facility/>

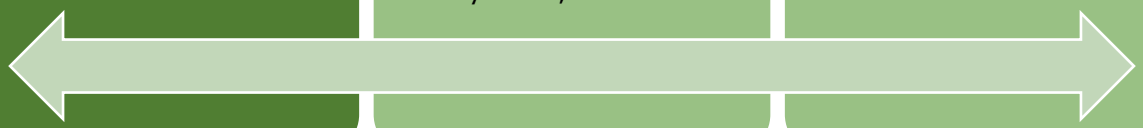


Project Liaison:

Bryan Bayer
(315) 455-2000
bbayer@cscos.com
C&S Engineers, Inc.
499 Col. Eileen Collins BLVD
Syracuse, NY 13212



Learn about the project!



APPENDIX C
Fact Sheet

Massena Green Hydrogen Facility



PROJECT FACT SHEET

A Public Participation Plan (PPP) has been developed in accordance with NYSDEC Commissioner Policy 29, Environmental Justice and Permitting (CP-29).

WHAT IS THE PROPOSED PROJECT?
The Proposed Project involves construction of a facility that will produce liquid hydrogen by electrolysis to be used as a fuel source. To implement the proposed project, Air Products & Chemicals has submitted an application for a State Pollutant Discharge Elimination System (SPDES) permit to the New York State Department of Environmental Conservation (NYSDEC) for wastewater discharge associated with the proposed project.

WHY DOES THE PROJECT NEED A SPDES PERMIT?
Within NYS, Article 17 of the Environmental Conservation Law (6 NYCRR Part 750), entitled "Water Pollution Control", employs the State Pollutant Discharge Elimination System (SPDES) program to maintain quality and purity standards of NYS surface and groundwaters. SPDES permits are required for certain regulated activities, including constructing/using an outlet or discharge pipe ("point source") to discharge wastewater into state waters, construction/operation of a disposal system, existing permit modifications/transfers/renewals, etc. *Wastewater discharge occurs as a result of the overall electrolysis process, which triggers the need for a SPDES permit. Wastewater will meet NYSDEC standards for entering local waterways.*

HOW MIGHT THE PROJECT AFFECT THE SURROUNDING COMMUNITY?
The proposed project is not anticipated to result in adverse impacts to the community. There will be no disruption or relocation of local businesses or residences. In addition, no significant impacts related to local traffic or availability of public services are expected during project operations. Short term impacts associated with construction are anticipated to be minor, but may include: minor traffic issues; possible increased noise levels during construction; and, potential stormwater impacts during construction.

HOW CAN I GET INVOLVED?
Submit comments in writing, by phone or email to the listed Project Liaison.

Attend the upcoming public meeting scheduled for July 12, 2023, to learn about the project, ask questions and/or express concerns about the project. (In-person from 4-5:30 pm at the Massena Town Hall, virtual from 6-7 pm).
Virtual meeting: www.zoom.com
Meeting ID: 964 2773 3577
Passcode: 981751

WHO IS RESPONSIBLE FOR REVIEWING THE PERMIT APPLICATION?
New York State Department of Environmental Conservation
317 Washington Street, Watertown, NY 13601
(315) 785-2245
dep.r6@dec.ny.gov



For application materials, documents and information about the project, visit the online document repository:
<https://www.cscos.com/massena-green-hydrogen-facility/>



Project Liaison:
Bryan Bayer
(315) 455-2000
bbayer@cscos.com
C&S Engineers, Inc.
499 Col. Eileen Collins BLVD
Syracuse, NY 13212



Applicant:
Air Products & Chemicals
Facility: Massena Hydrogen Facility
NYSDEC Application Number:
6-4058-00198/00001

